

# LITTLE HADHAM

P A R I S H   N E W S

FEBRUARY 2026

Your local free magazine printed & distributed by St Cecilia's Church





## LETTER FROM

# The Rectory

### WHEN EVERYTHING CHANGES, WHAT REMAINS?

As another year begins, I'm noticing the small markers of time passing — like having to scroll a little further to find my birth year on online forms. Even babies born in 2025 will soon be taking that extra step. It's funny how something so small reminds us we're moving forward.

Seasons shift, people come and go, and the calendar keeps turning.

January brings the anticipation of birthdays and anniversaries; some arrive quickly, others take their time, yet soon enough we're celebrating again. Before long, another Christmas and New Year's Eve will have passed. Time circles in its rhythm yet always moves us onward.

We journey through life's stages: from daycare to school, through exams and early adulthood, suddenly paying taxes, rushing school drop-offs, and counting our days and weeks. Eventually retirement greets us, and with it a new chapter we then now become mentors, the ones others look to for wisdom just as we once did. And yes, by now, we scroll much much longer to get to our birth years.

Yet through all these phases, certain constants remain.

Have you noticed how, despite all this change, some things quietly stay the same? It makes me wonder what truly endures.

Take trends. Fidget spinners once filled every backpack, then disappeared as quickly as they arrived. Fashions, gadgets, viral moments, what's essential today becomes yesterday's memory.

But not everything fades.

Consider the lasting presence of Jesus. Across eras and cultures, His name persists. Whether ignored, questioned, or followed, His influence endures. Someone once told me the three most recognizable names worldwide are Jesus Christ, Coca-Cola, and Michael Jackson. Brands and celebrities constantly reinvent themselves to stay relevant.

Jesus doesn't. He isn't rebranded or updated. His message of love, forgiveness, and hope remains steady and vital.

What are your constants? What beliefs or values have stayed with you as everything else shifts? Jesus is not a passing trend. Across generations, people continue to seek Him in faith, doubt, or hope.

Perhaps that timeless appeal deserves reflection.

As this new year unfolds, may you discover what truly lasts.

Have a blessed 2026, and best wishes as we seek what endures.

Revd T.

## LITTLE HADHAM PARISH NEWS

### PRIEST IN CHARGE:

REVD IBITAYO (TAYO) WALE-FALOPE

### ADMINISTRATOR TO THE RECTOR:

01279 842 609  
muchhadhamrectory@gmail.com

### CHURCHWARDEN:

KARIN GREEN  
01279 771 532  
churchwardenstcecilias@gmail.com

### EDITOR:

ANNE WRIGHT  
littlehadhampn@gmail.com  
To find out more about the life of our Church, please visit our website:  
[www.riverashchurches.org.uk](http://www.riverashchurches.org.uk)

### EDITORIAL DEADLINE

All articles for inclusion and payment for advertising in the next issue **must** be received by the **15th** of the month.

(BACS preferred, email the editor for details.)

Editor reserves the right to edit copy received, and add or omit pictures where necessary.

View the Parish News Online including back issues:

[www.littlehadham-pc.gov.uk/parish\\_news.html](http://www.littlehadham-pc.gov.uk/parish_news.html)



### FROM THE REGISTERS OF ST. CECILIA'S CHURCH

Nothing from the registers this month.

## ADVERTISING ENQUIRIES

If you would like to advertise in our magazine, please contact the editor at: **littlehadhampn@gmail.com** for more details.

The Parish News is funded and distributed freely by St Cecilia's Church. We really appreciate the support of all our advertisers to help cover our overheads and keep the Parish News in print. Please support them and shop local.

So if you run a business or service and would like to invest in your local magazine and reach over 500 homes each month with your product or service, we'd love to hear from you.

We offer ads at 4 different sizes and prices from a full page to an eighth of a page, with discounts for taking a year at a time. We can also insert flyers for a small fee.

You can also offer support by making a donation to the magazine, contact the editor for details.

The magazine is written by many contributors who report for themselves or for a club or organisation they represent. The church and production team does not necessarily agree with the opinions aired in any article printed here.

# DOWN AT THE DOCTORS

ANDREW WILKINSON, PRACTICE MANAGER

[www.muchhadhamhealthcentre.co.uk](http://www.muchhadhamhealthcentre.co.uk)



Firstly, a huge thank you to all our wonderful patients for the very generous Christmas gifts. Bottles of wine, chocolates, biscuits and tins of sweets were very much appreciated, although several members of the team are now firmly committed to 'starting the diet' again! Your kindness and thoughtfulness really do mean a lot to us.

We hope you all had a lovely Christmas and wish you a happy, healthy 2026.

Over the festive break, I watched an excellent film directed and starring Kate Winslet and a stellar cast called Goodbye June. It centres on a wife, mother and grandmother who is dying of cancer and is given just a couple of weeks to live. While that may sound heavy, it really isn't a morbid or depressing film. In fact, it is very funny in parts, with Dame Helen Mirren playing a formidable matriarch who makes her wishes crystal clear.

What struck me most was how the film explores the tension between what families think is right for their loved one, and what that person actually wants for themselves. It gently but powerfully highlights the importance of listening to the individual at the centre of care.

This links closely to the important work our Patient Group is currently undertaking around Advance Care Planning (ACP).

Advance Care Planning is about empowering people to think ahead and, if they wish, to talk about and document what matters most to them. It helps ensure that if someone

becomes too unwell to make decisions for themselves, their wishes are already known and respected.

This plan is for anyone to record future care wishes. Everyone needs to think and talk about death. It is the only thing we know will happen to all of us.

Recording your wishes explains who you are and what is important to you. This helps to ensure that your wishes are considered when decisions are made about your future care, especially if you are unable to make decisions.

It may help to involve family or friends as you consider your preferences. Understanding what you want will help them to tell other people if you can't.

It may comfort them to know that they have done their best to carry out your wishes.

This document belongs to you. You can show it to anyone involved in your care. You can add to it or change your decisions at any time.

If you would like to find out more, please use this link

[www.nhs.uk/tests-and-treatments/end-of-life-care/planning-ahead/why-plan-ahead/](http://www.nhs.uk/tests-and-treatments/end-of-life-care/planning-ahead/why-plan-ahead/)

or keep an eye out for further information from our Patient Group.

With best wishes for the year ahead,

Andrew



## Caring Companions

Promoting Independence. Lessening Isolation.

- Local team supporting elderly people
- Companionship in your home
- Practical help with day to day living
- Personal, tailored and flexible support

**Carolyn Westlake 07827 331 987**

## Town & Country Sweeps

Chimney Services

**07703 740638**

[karl@townandcountrysweeps.com](mailto:karl@townandcountrysweeps.com)  
[www.townandcountrysweeps.com](http://www.townandcountrysweeps.com)

**CLEAN CHIMNEYS ARE SAFER CHIMNEYS**

- Chimney Sweeping
- Service & Maintenance
- Bird Guard & Cap fitting
- CCTV Inspections
- Bird Nest Removal

ACCREDITED BY NICE  
HETAS

BOOK YOUR 1ST CLASS FOR £5

# YOU TIME!

Come and join us for a Reformer Pilates, Yoga, or Barre class. At our beautiful studio at Wickham Hall, Bishop's Stortford.

**Call/Book online**  
[www.akashawellness.co.uk](http://www.akashawellness.co.uk)  
**01279 757633**

 **AKASHA WELLNESS**  
Yoga & Pilates



# YOGA studio

POWER YOGA  
SLOW FLOW  
YIN YOGA  
for all levels

flow balance energize

**INFO & BOOKING**

[www.janeroseyoga.com](http://www.janeroseyoga.com)  
[@janeroseyoga](https://www.instagram.com/janeroseyoga)  
07860 929379  
RoseYoga Studio, Stortford Road, Standon, Herts, SG11 1ND

## CHLOÉ BURROUGHS REFLEXOLOGY

Relaxing and Rebalancing Reflexology Treatments  
Advanced Facial Reflexology

[www.chloeburroughsreflexology.com](http://www.chloeburroughsreflexology.com)  
Phone: 07863346212  
Email: [Info@chloeburroughsreflexology.com](mailto:Info@chloeburroughsreflexology.com)

Treatment Room in Little Hadham  
Come and experience the power of reflexology





# thank you

We have two notices this month from residents wanting to say a heartfelt thank you to someone special.

It's always heart-warming to hear these stories and as I'm sure you keep hearing too, gratitude is good for our health! If there is anyone special in the village to whom you are grateful and would like to say thank you, please send us your story at: [littlehadhampn@gmail.com](mailto:littlehadhampn@gmail.com)

Little Hadham has been our home since 1991 when we bought Stumbledon or, as it was known to many at the time, "Walter's old house" referring to Walter Sweatman who had been the previous owner. The house had not been occupied for a few years so we had a lot of work to do to make it habitable. It wasn't until March 1992 that we finally moved in.

All of our neighbours in The Ford were very welcoming, and we felt at home immediately. Of course, many of those neighbours are now, sadly, no longer residents but their replacements are just as friendly and hospitable if not more so.

Earlier last year, courtesy of a prompt diagnosis by our wonderful Dr Mathanarajah, I was diagnosed with prostate cancer. I had no idea this cancer was in my body and I felt perfectly well (for an 82 year old). I had virtually every scan known to man and a biopsy which confirmed the condition. In November and December I had to travel every weekday for four weeks for radiotherapy at North Middlesex Hospital, the nearest NHS hospital offering this treatment. It meant driving down the M11 and round the North Circular Road, a tiring journey at the best of times.

Human nature is a weird and wonderful thing and sometimes you find out more about people in the most unusual of circumstances. Once our close friends and neighbours heard about my situation, we received offers of help which we found quite overwhelming.

Having completed my radiotherapy sessions on 19th December, Brenda and I were told that a team of neighbours were coming over the next day to put up the Christmas lights on the house! The boys did the outside and the girls did our sitting room complete with a decorated tree. Brenda and I were not allowed to do anything (I admit I did nothing) except make tea and coffee to accompany the Christmas mince pies and sausages!

We should like to thank everyone who has been so kind during this difficult time, your help and support is unbelievable. You are unsung heroes.

It is wonderfully reassuring that there are still people in this world who will do things for others without being asked or seeking any personal reward.

A very big thank you to you all.

*Brian and Brenda Kain*

## IZZY HELME

Izzy is in the process of completing her Silver Duke of Edinburgh award, for her volunteering section she chose St. Cecilia's. We are very grateful for all the help she provided, over the 6 months, not only on some Sunday morning services and Christingle but also cleaning and helping to lock the church. We wish her all the best for the future.

*The Churchwardens of St Cecilia's*



<b>ST. CECILIA'S CHURCH,</b> LITTLE HADHAM   SG11 2DY  <b>SUNDAY WORSHIP</b> 9:15AM - 10:15AM EVERY THIRD SUNDAY OF THE MONTH  <b>MID-WEEK WORSHIP (BCP)</b> 10:00AM - 10:30AM EVERY FOURTH THURSDAY OF THE MONTH		<b>ST. ANDREW'S CHURCH,</b> MUCH HADHAM   SG10 6DH  <b>SUNDAY WORSHIP</b> 9:15AM - 10:15AM SECOND & FOURTH SUNDAYS OF THE MONTH  <b>SUNDAY EVENINGS</b> 5:00PM - 5:30PM FIRST SUNDAYS OF THE MONTH   EVENING WORSHIP	
<b>ST. MARY'S CHURCH,</b> ALBURY   SG11 2JQ  <b>SUNDAY WORSHIP</b> 9:15AM - 10:15AM EVERY FIRST SUNDAY OF THE MONTH		<b>ST. THOMAS' CHURCH,</b> PERRY GREEN   SG10 6DU  <b>SUNDAY WORSHIP</b> 9:15AM - 10:15AM EVERY FIFTH SUNDAY OF THE MONTH	

Sharing the Gospel in a New Way

## DO YOU NEED A GRAPHIC DESIGNER?

Hello! I'm a local graphic designer. I specialise in helping small businesses reach their full potential and attract new audiences. I can help you with:

- Branding & Logo Design
- Brochures, Leaflets, Posters, Reports
- Packaging
- Adverts & Marketing
- Web Design & Social Media
- Copywriting & Typesetting

Contact me on [anne@thehumblenline.com](mailto:anne@thehumblenline.com) to talk about your project.



Take a look at my portfolio and follow me online.  
 Website: [www.thehumblenline.com](http://www.thehumblenline.com)  
 Instagram: [@thehumblenline](https://www.instagram.com/thehumblenline)

thehumblenline  
graphic design



## LITTLE HADHAM Neighbourhood Plan

Since our announcement in the November edition about starting work on a new Neighbourhood Plan for Little Hadham, things have been steadily moving forward. The Steering Group — made up of nine local residents, including two parish councillors — has been meeting regularly, and we've already achieved an important milestone, with East Herts District Council formally approving the area designation and we are now an official working group of Little Hadham Parish Council.

A Neighbourhood Plan is a way for our community to set out a clear local vision for the future of Little Hadham, along with practical objectives and policies to help guide how change happens over the coming years. It sits alongside the district-wide planning policies but focuses specifically on what is important here in our parish — things like the character of our village, the mix and design of any new homes, protection of green spaces, local facilities, and how people get around.

Put simply, the plan is about making sure that, as decisions are made and pressures for change arise, the things that matter to residents are properly understood and reflected. It cannot stop all development, but it can influence where it goes, what it looks like, and how it contributes to village life. That is why local input is so important: the stronger and clearer the voice of the community, the more weight the plan is likely to have when planning applications are considered.

## STEERING GROUP UPDATE

In our meetings so far, we've been shaping the early building blocks of the plan. We've discussed what we value most about living in Little Hadham and what worries people about the future, and from that we have agreed some draft objectives and an overarching vision. These early drafts are intended to capture both what we want to protect and what we would like to improve, and they will guide our next steps as we gather more views from as many people as possible, across the parish.

To help with this, we have prepared a questionnaire which will soon be available online and delivered in hard copy to every household in the parish. This is your chance to have your say on the future of our village — what you value, what you would like to see change, and what you think should stay exactly as it is. Please do take a few minutes to complete it. The more responses we receive, from all ages and all parts of the parish, the better we can ensure that the Neighbourhood Plan reflects the views of everyone who calls Little Hadham home.

Finally, if you'd like to get more involved, we would be delighted to welcome new volunteers to join the Steering Group. It's not a big time commitment — we meet once a month in the village for an hour or two, with just a small amount of light admin in between meetings. It is a friendly group, and it's a great way to meet neighbours and to play a part in shaping Little Hadham's future.

***Little Hadham Neighbourhood  
Plan Steering Group***



100 YEARS  
WOOD BROS  
ENGLAND 1924

# Winter Sale\*

UP TO 25% OFF  
AT OUR WARE SHOWROOM



Discover our collections with our friendly expert team

Visit our Ware Showroom and save today

**UPHOLSTERY | CABINET | FABRIC | REFURBISHMENT**

Ware Showroom | **Online** at [woodbros.co.uk](http://woodbros.co.uk) | **Call Us** on 01920 469241

\*T&Cs. The Winter Sale discount applies only to Wood Bros full price items and cannot be used in conjunction with any other promotion. The sale runs from Monday 5th Jan to Friday 27th February





# LITTLE HADHAM PARISH COUNCIL

CAROLE PAGE

[www.littlehadham-pc.gov.uk](http://www.littlehadham-pc.gov.uk)

Little Hadham Parish Council meets the first Tuesday of each month in the Village Hall. There is no meeting in August or January. All residents and press are welcome to attend the meetings.

## MEETING DATES – ALL MEETINGS COMMENCE AT 7.30PM

3 Feb	3 March	7 Apr	5 May	2 Jun	7 Jul	1 Sep	6 Oct	3 Nov	1 Dec
-------	---------	-------	-------	-------	-------	-------	-------	-------	-------

Agendas are posted on noticeboards and the Little Hadham Parish Council website.

## DO YOU WANT TO BECOME A PARISH COUNCILLOR?

As the parish council is the first tier of local government, representing residents' needs you can make a difference. Ensuring local voices are heard on planning, development, and services. Reviewing planning applications and commenting on them to the principal local authority, influencing development. Driving local projects, supporting community groups, and addressing issues like litter, safety, and transport.

### Financial Management:

Deciding how to set the precept and spend public money for the benefit of the community, ensuring value for money.

### What is the Precept:

The precept is charged in bands with the average band being a Band D property, with some paying more or less than the average. EHDC sets the tax base D for its residents by calculating the total council tax requirements, which includes the County Council and Police and Crime Commissioner precepts. The council tax calculation sets the tax in respect of this council and the aggregate council tax inclusive of the Council and Police and Crime Commissioner precepts and of each town and parish council's precept. The total council tax requirement for East Herts in 2025/26 is £13,130,734.60 giving a band D equivalent of £201.04

## WE HAVE A VACANCY AND WOULD LOVE TO HEAR FROM YOU

If you'd like to hear more about the role. Contact the clerk on: [clerk@littlehadham-pc.gov.uk](mailto:clerk@littlehadham-pc.gov.uk)

## LITTLE HADHAM PARISH COUNCIL – JOIN VIA ZOOM

Join your Parish Council meeting via zoom. Give you a chance to see what is happening in the village without leaving your front room. You only need to email the clerk for the link. Simply click on the link and you join the meeting. You can choose to be anonymous and not turn on your camera.

Little Hadham Parish Council Website - <https://littlehadham-pc.gov.uk/>  
We now have a new PC website and would ask for any ideas as to content.

## ALLOTMENTS

We have 2 vacant allotments. If you wish to take on a wonderful project for the new year, please contact: [clerk@littlehadhamparishcouncil-pc.gov.uk](mailto:clerk@littlehadhamparishcouncil-pc.gov.uk)

## LITTLE HADHAM COMMUNITY GROUP – FACEBOOK PAGE

The group is for residents to share information about the village: roads closed, trees down, events in the village, etc. This is our Facebook page and is about our village and what is going on.



## LITTLE HADHAM RAMBLERS

Our walks are scheduled for:

**Wednesday 3rd February**

**Wednesday 3rd March**

**Wednesday 7th April**

**Wednesday 6th May**

We start from the Village Hall at 10am, with a return between 11:30-12pm. There is a lunch available at the Warm Spaces Café. Always a delicious choice of soup, filled jacket potato or a main meal. Dogs welcome.

The walks will be loaded onto the Parish Council website through Komoot.

## ATTENTION IMPORTANT NOTICE!

**Without your support Little Hadham Parish Council can't represent your wishes.**

The Parish Council meetings are where the future of your village is decided and we want to hear what you have to say and listen to your views, so please find an opportunity to come to one of our meetings.

**You can now join the monthly meeting online from home using Zoom**

Register online for the next meeting on **Tuesday 3rd February 2026.**

You should receive confirmation with joining link by email from the Clerk before the meeting

Meetings held first Tuesday of the month  
[clerk@littlehadham-pc.gov.uk](mailto:clerk@littlehadham-pc.gov.uk)

**We talk about important issues that could affect you.**

The Parish Council represents the village by;

- Attending Highways planning meetings
- Managing the playing field
- Reviewing planning applications
- Leading the development of the Neighbourhood Plan (so we have a say to what building will happen in our village)
- Driving local projects for the benefit of the village
- Keeping an overview of what affects the village.



OTHER PRODUCTS TOO! JUST ASK



OVER 25 YEARS OF QUALITY SERVICE

[andrewbanks.co.uk](http://andrewbanks.co.uk)

01279 626389

Visit our Bishop's Stortford showroom with a huge selection of sofas, chairs, sofasbeds and recliners

# Easy Chair & Sofa Co

*The South East's Largest Sofa and Chair Retailer*



Talk to the experts - our personal service, attention to detail and 40 years of experience set us apart from the rest

34 Twyford Business Centre, London Road, Bishop's Stortford, CM23 3YT. T: 01279 465863

[www.easychaircompany.co.uk](http://www.easychaircompany.co.uk)



CRISTINA HARRISON, CURATOR

[hadhammuseum@gmail.com](mailto:hadhammuseum@gmail.com)

## HADHAM MURALS 450 PROJECT

The internationally significant Tudor wall paintings inside Forge House are 450 years old this year! We are planning to host lots of activities and events in celebration during our 2026 season. We hope that you will all get involved in some way; be it as a volunteer, an event participant, a museum visitor or an online follower.



## THE MUSEUM GARDENS

We have been super privileged over the last ten years to have had Charlie, our Wisley-trained gardener, our flexi-time approach suited her while juggling kids at school and work. Snapped up by new clients, we wish Charlie ongoing success with her new horticultural projects.

Finances have been very tough for our charity over recent years and the garden is one of the difficult budget cuts made during 2025. This means we need volunteers to help maintain the beautiful gardens developed over the last 35 years. We need help with the veg garden, fruit trees, hedges and general pruning.

If you have some experience to offer, extra plants from your allotment / greenhouse or you just want to get involved (it's great for your wellbeing too!), please get in touch, we would love to hear from you.

[hadhammuseum@gmail.com](mailto:hadhammuseum@gmail.com)

07483 113 345



**STORTFORD PARK PHYSIOTHERAPY**

Based at Wickham Hall CM23 1JG

**Contact us for appointments or information**

**Tel:** Diana 07506 693 158

**Email:** [dianastortpark@gmail.com](mailto:dianastortpark@gmail.com)

**Web:** [stortfordpark.physio](http://stortfordpark.physio)



# LITTLE HADHAM GARDENING CLUB

ANNE WILLET

Our next meeting is on the **17th February 2026** at Little Hadham Village Hall at 12.30pm for our Ploughman's Lunch. Please contact Jane on 07749 829 699 or on our WhatsApp group to let her know whether you would like cheese or pate, or a mixture of both - followed by a Millennium Wood update by Jon Kemmish. The cost is £7 to members and £10 to non-members.

Hellebores are classic plants for winter interest, with elegant nodding blooms in shades of green, white, pink or plum or even blackish-purple are set among clumps of leathery, evergreen leaves. Most hellebores are compact, 30-45cm tall, but bolder types, such as *Helleborus argutifolius* and *Helleborus foetidus*, can grow to 90cm.



## HELLEBORUS FOETIDUS

Hellebores grow best in fertile, evenly moist soil, although they should be fine in most soil types. Whilst they prefer light shade, they will often cope in a sunnier spot as long as the soil doesn't get too dry. The stinking Hellebore foetidus is happy in deep shade. The popular oriental hybrids (*Helleborus x hybridus*) are hardy, but *H. thibetanus*, *H. lividus* and *H. niger* are easily damaged by winter cold and wet.



## HELLEBORUS X HYBRIDUS

Cut back the old leaves in late winter or early spring to ensure the nodding flowers are on full display. This also helps to control hellebore leaf spot disease. Hellebores often self-seed and the resulting offspring can grow to smother the original plant. So dig up and move seedlings before they get too large, or remove the seed pods before they open, cutting stems at the base, to prevent unwanted seedlings.



## HELLEBORUS ERICSMITHII 'WALBERTONS IVORY PRINCE'

Although often known as Christmas or Lenten roses, because they flower from late winter into spring, hellebores are not related to roses. Instead they belong to the buttercup family.



## High quality creative education for children from 3-11

Emphasis on nurturing each child as an individual.

Care provision from 7.45am to 6.00pm including excellent all day nursery.

“ A positive active ethos that strives for excellent personal and academic development. ”



Little Hadham  
Primary School

By far the best way to find out about a school is to visit it.

Please phone us on 01279 771285 to make an appointment.



## CJ Gardening Services

For all your gardening requirements  
Call CJ Gardening 07713 790545

For a reliable, conscientious and trustworthy service. Choice of male or female gardeners. Customer recommendations available.

Pruning - Planting - Weeding - Fencing -  
Jet washing - Seasonal tidy ups

Call Johnny on 07713 790545 for a friendly chat about your requirements.

**£20 OFF**  
YOUR FIRST APPOINTMENT WITH THIS ADVERT\*

- Chiropractors
- Physiotherapy
- Osteopathy
- Chiropody & Podiatry
- Sports Massage
- Acupuncture
- Hypnotherapy
- Nutritional Therapy
- Yoga, Pilates & Tai Chi
- Counsellors
- EMDR Therapy
- GP Services:

Botox, Skin Tag Removal & Hair Loss Treatments

**01763 87 80 87**  
[www.attend2health.co.uk](http://www.attend2health.co.uk)  
27 High Street Buntingford SG9 9AB  
\*Valid for Chiropractic, Osteopathy and Physiotherapy New Patients only.

Award-winning Clinic

**TRUSTED STANDBY BASED WILL WRITER**

- ◆ Will Writing & Trusts
- ◆ Lasting Power of Attorneys (LPA's)
- ◆ Probate Administration
- ◆ Inheritance Tax and Estate Planning

Providing a professional, friendly service, I offer free advice and will guide you through your options.

Member of The Society of Will Writers

[www.dqrwillsandprobate.co.uk](http://www.dqrwillsandprobate.co.uk)  
01920 747208 | [emma@dqrwillsandprobate.co.uk](mailto:emma@dqrwillsandprobate.co.uk)  
f See my recent reviews on Facebook: @dqrwillsprobate



## CAMPAOLOGIST CHRONICLES

hadham.bells@gmail.com

www.riverashchurches.org.uk/river-ash-churches-bellringers



### QUASI'S BUSY CHRISTMAS SEASON

Quasi is writing this on Boxing Day, hands still cooling from the wonderful frenzy of Christmas Eve/Day/carol service ringing!

After a warmup with the St Andrew's school carol service and several benefice carol services, our big day comes, Christmas Eve. 2pm: ringing for the Crib service at Stortford. Then we screeched off to 3:45: St Andrew's, Much Hadham, for the Big Nativity service. Quasi was met by the wonderful sound of the enormous scratch brass & wind band practising hymns - a challenge for us as the bells are much quieter inside the church - but loud conducting and a bit of waving managed to overcome the competition! Christmas outfits were on: one ringer in jingly reindeer antlers, and Tayo in a crown - hopefully because he was playing a part in the Nativity, although maybe just for fun! We were excited that this was the Christmas debut of our wonderful

new recruit Elaine, who after several months of work has nearly got her Level 1 certificate (ringing bell under control) and is now ringing as part of the band. We were very glad she could be included in this most exciting service at St Andrew's.

Part of the band sprinted off to ring at Little Hadham (5pm), while Quasi (5:30pm) did the Furneux Pelham carol service and later (10pm) the Brent Pelham midnight mass. Delightfully, one of our younger ringers was able to overcome her shyness & try her next

ringing goal in the progress book, without a teacher by her side for the first time - a burst of Christmas spirit seemed to give her the courage, and I think she surprised herself with her success.

Christmas morning started at Albury. Last time we did that, one of the band fainted with the exertion - thankfully no A&E this year! And finally, a ring for the 10am service at Bishop's Stortford. Often everybody's here, there & everywhere at Christmas, but this year, they were all here. It was particularly joyful that a number of regulars' children at university were back for their holidays and ringing with us - so nice to see youngsters we'd known and watched grow up, now thriving as young adults.

Quasi

Find out more about  
Bellringing by scanning the  
QR code here with your  
mobile phone camera.



# ZEN GARDEN RETREAT

Massage Therapist - Bury Green, Little Hadham  
www.zengardenretreat.co.uk • info@zengardenretreat.co.uk  
Tel: 07303 127262

# Jacks

CONTRACTORS

We provide a range of Groundworks  
& Hard Landscaping services.

- Digger & Operator Hire-
- Foundations & Concrete Bases-
- Drainage Installation & Repairs-
- Site clearance-
- Driveways & Patios-
- Retaining Walls & Fencing-

Please visit  
Jackscontractors.co.uk  
for more information

01279 597343 07304 049590  
Sales@jackscontractors.co.uk

# Rachel's Pooch Pals

**Dog Walking & Pet Care Services**

- 🐾 Dog Walking and/or "Pop in and Plays"
- 🐾 Holiday cover/Sleepovers in your own home
- 🐾 Fully Insured & DBS Approved
- 🐾 Canine First Aid Trained

07753 162561  
rachelspoochpals@gmail.com  
@rachelspoochpals  
Est. 2022

🐾 🐾 🐾 🐾





## SNOWFLAKES, SCAVENGER HUNTS AND WINTER BIRD WATCHING

January has swept through our woods with every kind of weather imaginable - bright golden mornings, cold gusts of wind, heavy rain showers, sleet, and even a magical dusting of snow. The children have taken it all in their stride, wrapping up warm and embracing the elements with their usual enthusiasm. Not even the wildest weather has stopped us from running, exploring, and making the most of every session.

We welcomed the new year with a delicious activity, making edible sparklers from breadsticks dipped in chocolate and sprinkles. While the chocolate was melting over the campfire, children explored the forest for signs of winter.

Our winter scavenger hunts have been a highlight, with children using clipboards and checklists to search for signs of the season. They spotted frosty leaves, icy patches, bare trees, and even frozen cobwebs sparkling in the cold.

This month we've also been learning about birds as part of the RSPB Birdwatch. The children discovered which species live in our woodland and how to support them during the colder months. Making pinecone bird feeders was a big success, and the Little Hadham Primary School after-school club has been especially enthusiastic about joining the birdwatch. We've kept cosy

NIKKI & LOUISE

[www.woodlandrangers.co.uk](http://www.woodlandrangers.co.uk)

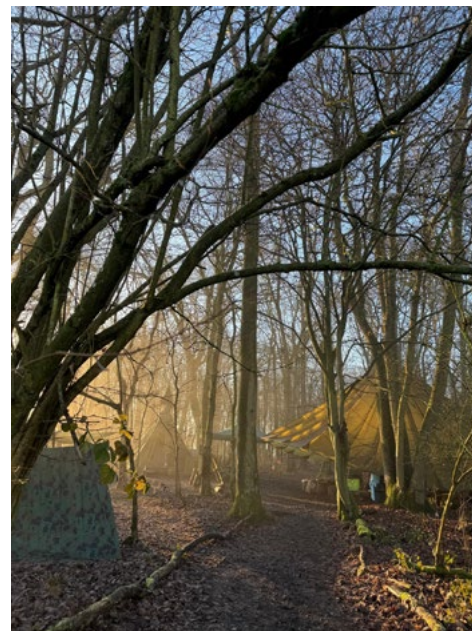
 woodlandrangersuk



in our shelters with hot chocolate and shared beautiful books about birds.

Our Home Education group has been busy building dens and natural shelters, showing brilliant teamwork and resilience.

We're now looking forward to February's family days, Lunar New Year celebrations, and Valentine's activities.





# WILDFIELDS THERAPY

ALLIEE AND EMMA

therapy@wildfieldstherapy.co.uk

## THERAPY FOR ALL AT THE VILLAGE HALL

Life does not always move in straight lines. Sometimes it wanders, like a footpath through long grass, shaped by weather, seasons, and unexpected turns. Wild Fields was created with this understanding at its heart: that being human is complex, tender, resilient, and deserving of care.

Wild Fields is a new community counselling and psychotherapy service rooted in the belief that everyone should have access to emotional support, whatever stage of life they are in. We work with children from the age of 3 through to adults, offering a calm, supportive space to explore the many experiences that shape us. We can also work with families. Issues may include anxiety, depression, school avoidance/anxiety, bereavement, trauma, sexual abuse, relationship difficulties, neurodiversity, disordered eating or simply feeling lost or overwhelmed and in need of someone to talk to.

We use different therapeutic approaches based on the needs of the client. For younger children this is usually play therapy and for older children and adults we may make use of creative arts as well as talking therapies.

As a Community Interest Company (CIC), Wild Fields exists for the benefit of the community. Our focus is on providing compassionate, ethical and affordable support with an aim that cost is not a barrier. During an initial assessment we will discuss your circumstances and agree a fair fee based on a sliding scale



payment model. Those who are able to pay a little more will help us support those who cannot.

As Wild Fields grows, and as we receive further funding or donations, our aim is to lower costs further, allowing the field to widen so that more people, for whom cost might otherwise be a barrier, can find a place within it. We have created a beautiful, calm therapeutic space in the Ash Room at Little Hadham Village Hall, thoughtfully designed to feel safe, welcoming, and grounded.

Behind the gentle name is a team of highly qualified, experienced therapists, BACP and UKCP registered, with many years of professional practice between them. We bring deep training, clinical knowledge, and ethical care to our work, alongside warmth, creativity, and respect for each individual's story.

At Wild Fields, there is no expectation to be "fixed" or to follow a single path. Therapy is a collaborative process - a chance to slow down, notice what is growing, what feels tangled, and what might need tending. To find out more or to make an enquiry, please contact:

Email: [therapy@wildfieldstherapy.co.uk](mailto:therapy@wildfieldstherapy.co.uk)

# DANIEL ROBINSON & SONS

Independent Family Funeral Directors & Monumental Masons

Est 1892

Always here when you need us...

- Arrangements in the comfort of your own home, if preferred
- Private Chapels of Rest
- Prepaid funeral planning services
- Traditional & contemporary funerals to suit your wishes



79/81 South Street  
BISHOP'S STORTFORD  
01279 655477

3 Bullfields  
SAWBRIDGEWORTH  
01279 722476

[enquiries@drobinson.co.uk](mailto:enquiries@drobinson.co.uk) ~ [www.drobinson.co.uk](http://www.drobinson.co.uk)

**VST**  
PAINTING &  
DECORATING

Laurence Baldwin  
[laurence@vstdecorating.co.uk](mailto:laurence@vstdecorating.co.uk)  
07989 968 278

Your local decorator

Fully Insured

Find us on  
**Checkatrade.com**

**TPM**  
for your  
**Total Property Maintenance**  
Painting & Decorating  
&  
General home repairs

Call Tim Mearing  
for a free estimate

07970 599 204  
01279 771 288

E-mail: [timmearing@hotmail.com](mailto:timmearing@hotmail.com)

Highly respected local service based in Little Hadham.  
Established in the area for 20 years.  
Fully insured.

# LITTLE HADHAM VILLAGE HALL NEWS

JOAN MCKINLAY

www.littlehadhamvillagehall.com | vice-chair@littlehadhamvillagehall.com

A big thank you to Dave Willett who again in 2025, raised funds to donate to the village hall through his engagement with local groups who he delivers talks to throughout the year on a variety of topics. Last year he has raised an amazing £1,500 – well done Dave and thanks again for your continued support.

Our events committee has created an exciting programme of entertainments for you to enjoy in 2026. We've got lots of events lined up and we hope as many of you as possible will come along to enjoy and support our programme of 'What's On' in 2026. Not all our events are fundraisers. Some events only cover known costs as we feel it is important for everyone to have an opportunity to access their village hall.

Our events programme starts this month with **Valentine Bingo** on **Monday 9th February**, followed by **Community Brunch** on **Thursday 12th February** and **Afternoon Cinema** on **Monday 16th February**. We are holding a **'Traitors' Quiz** on **Saturday 21st March**. To join in this exciting fun evening of quizzing and stealing points, round up a team of between 4-8 and book your places via our website. As always, details of all our events are listed on the village hall website. Don't forget that you can receive regular 'What's On' updates directly to your email address. Sign up to our monthly 'What's On' by sending your email address to **vice-chair@littlehadhamvillagehall.com**

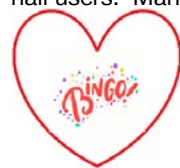
To help us manage bookings for those attending events, please use the same name and email address when making

group bookings via our website or when using the booking link provided in email communications. Due to the popularity of events, people who book separately cannot always be guaranteed seats to sit with a particular friendship group, so please be mindful of this when booking.

Does your group have an event open to the local or wider community being held at Little Hadham Village Hall? Reach a wider audience by advertising on the village hall website and/or via our email marketing. Please email details of your event and a png, image to **vice-chair@littlehadhamvillagehall.com**

## EXTERIOR MAINTENANCE AND SECURITY IMPROVEMENTS

In January, contractors carried out work to replace and repair soffit boards to the exterior of the main hall and install new CCTV. This work was much needed due to rotten wooden soffits and outdated CCTV. This work had a combined cost of £10,950, made possible by a generous legacy and continued fundraising. Also in January, volunteers installed solar lighting around the exterior of the hall and car park to improve the security and safety of our hall users. Many thanks to all involved.



## VALENTINE BINGO

**Monday 9th February**  
**2pm to 4pm**

Come and join in the fun at our valentine themed Bingo Afternoon.

- Cost £8 per person. Book now online with payment taken at the door.

- Bar available for wine, beer, non-alcoholic drinks & ice cream.

(Please note that as a charity we are unable to issue cash prizes).

Spaces available to book online via our website. [www.littlehadhamvillagehall.com](http://www.littlehadhamvillagehall.com) Select What's On from website menu – then select Events from the drop-down menu to browse for listing.



**RED CHAIR COMMUNITY CINEMA PRESENTS: THE ROSES (2025)**



## Monday 16th February

Satire/Tragedy/Comedy – Cert 15. Runtime: 1hr 45mins.

- Film synopsis on website
- Doors Open 2pm – Film Starts Promptly at 2.30pm
- Entry tickets £5 per person
- Licensed Bar/Ice Creams/Tea & Cake



## MOVING ON

Many of you will know that Jan Williamson resigned as Chair of the Village Hall in April 2025. Since then,

Jan has continued as a trustee on the management committee and as part of everyday life at the hall. Her resignation as Chair last April allowed her time to manage her personal affairs and phase out her many village hall commitments in preparation for a house move to a new area. On behalf of the management committee, I would like to say a massive thank you to Jan for all her hard work supporting the village hall over the past 20 years. I would also like to extend a personal thank you to Jan for all the invaluable help and support she has afforded me over the past six years as Vice-Chair. Jan, the place won't be the same without you, and you'll be sorely missed by us all. Please accept our love and best wishes for the future and every happiness to you and Geoff for your new home and life in Suffolk.

## AGM – TUESDAY 14TH APRIL

During 2025, the management committee could not find a replacement Chair for the committee. Instead, the Management Committee consolidated to cover the responsibilities of that role, and we will address the appointment of a new Chair at our AGM. If you are interested in meeting members of the village hall management committee, please come along to our AGM on Tuesday 14th April at 7pm. After the official business of the AGM, we will be offering refreshments and celebrating the achievements of our groups and volunteers.



## Red Chair Community Cinema

Relaxed Afternoon Film Screenings  
Little Hadham Village Hall  
The Ford, Little Hadham - SG11 2BP



Pay at the Door - Entry £5

Doors open: 2.00pm - Film starts promptly at 2.30pm

Refreshments:

Licensed Bar/Ice Creams/Tea & Cake

**Monday 16th February 2026**

**The Roses (2025)**

• Satire / Tragedy / Comedy Cert 15 - Runtime: 1hr 45mins

Life seems easy for picture-perfect couple Ivy (Olivia Colman) and Theo (Benedict Cumberbatch): successful careers, a loving marriage, great kids. But beneath the façade of their supposed ideal life, a storm is brewing – Theo's career nosedives while Ivy's own ambitions take off, a tinderbox of fierce competition and hidden resentment ignites.



## HANDS ON SOURDOUGH

**Thursday 26th February. 10am to 12pm**

Learn how to make sourdough bread at Ella's fun and interactive baking sessions. Please reserve your place/s online via our website. Alternatively phone Ella on M: 07970 249 787.

- All ingredients supplied for a £5 donation
- Maximum 8 people per session.

## LOOKING FOR A VOLUNTEERING OPPORTUNITY IN THE NEW YEAR?

We are currently looking for help with:

- Our Welcome Café, particularly if you enjoy cooking or baking
- Support at events, including setting up tables and chairs (other roles available)
- Meeting weekend hall hirers to open and close at end of hire

We hope to be able to carry out work to freshen up the exterior wooden cladding once the warmer weather returns. If you are interested in helping with decorating or maintenance projects, please get in touch via email: [vice-chair@littlehadhamvillagehall.com](mailto:vice-chair@littlehadhamvillagehall.com)

## KEEPING YOU BUSY AND CONNECTED DURING THE WEEK

Details of events held at the hall are available to view on our website along with information on regular activities and fitness groups:  
[www.littlehadhamvillagehall.com](http://www.littlehadhamvillagehall.com).

If you would like to know more about anything in this article please contact Joan McKinlay on: 07789 098 071 or email: [vice-chair@littlehadhamvillagehall.com](mailto:vice-chair@littlehadhamvillagehall.com)

## LITTLE HADHAM VILLAGE HALL - SG11 2BP



## Hands On Sourdough

JOIN ELLA

AS SHE DEMONSTRATES HOW TO MAKE SOURDOUGH BREAD

Maximum 8 people per session

All ingredients provided

Request for £5 donation at the event - 10am to 12pm

**Thursday 29th January, Thursday 26th February or**

**Thursday 26th March 2026**

**Book sessions online via our website**

**[www.littlehadhamvillagehall.com](http://www.littlehadhamvillagehall.com)**

From the website menu, choose 'What's On'/Events  
or phone Ella: M 07970 249787

# WHAT'S ON IN FEBRUARY @ LH VILLAGE HALL

## WEEKLY ACTIVITIES

### MONDAY'S

Mum's Matter 10am -11.30am **Drop in:** Parents group supported by NHS Midwife.

### TUESDAY'S

Brownies 5.30pm to 7pm Cassey Email: littlehadhambrownies@gmail.com

### WEDNESDAY'S

Welcome Cafe	10am - 2pm	<b>Drop in:</b> Coffee & Chat. (Lunch Menu)	<b>DONATIONS</b>
Chair Yoga	11am - 11.45am	Mark Cox	M: 07368 293062
Tai Chi & Qi Gong	1pm - 2pm	Sarah Baker	M: 07740 701102
Digital Inclusion	2pm - 3.30pm	<b>Drop in:</b> Help with your digital device	<b>FREE</b>
Fit Steps	6pm - 7pm	Jacqui Howard	M: 07731 454228

### THURSDAY'S

Love to Sing	10am - 11am	Jenny	<b>M: 07823 884445</b>
Afternoon Bowls Club	2pm - 4pm	Mike	Email: mikebennett12@aol.com
Hatha Yoga	7pm - 8pm	Kirsty Smith	M: 07903 035180

### FRIDAY'S

Forever Fit	11am - 12pm	Daisy Osborne	M: 07585 309933
LH Bowls Club	7.30pm - 10pm	Annette Luedtke	Email: annetteluedtke@gmail.com

### FORTNIGHTLY

Darts & Games Social 2pm - 4.30pm **Drop in:** Tuesday 3<sup>rd</sup> & 24<sup>th</sup> February **COST: £3**

Please check dates for Darts & Games sessions during January and February, as not on alternate Tuesdays

### MONTHLY - Please see website for full details

Community Brunch 10am - 12pm **Book via website:** Thursday 12<sup>th</sup> February **DONATIONS**

### OTHER

**Monday 9<sup>th</sup> February - Valentine's theme Bingo.** Book online. £8 per person

**Monday 16<sup>th</sup> February - Red Chair Community (Afternoon) Cinema: The Roses (2025) Cert 15**

Doors Open 2pm Film Starts Promptly at 2.30pm. Entry £5. Refreshments available to purchase.

**Wednesday 18<sup>th</sup> February - Citizen's advice** at Welcome Café between 10.30am and 12.30pm. If you have any issues you wish to discuss with them, please come along. Lunch/Coffee available at the Café.

See website menu for full details of 'What's On': [www.littlehadhamvillagehall.com](http://www.littlehadhamvillagehall.com)

'Drop in' - just turn up **When contact details are listed** - please phone / email before attending.

**LITTLE HADHAM VILLAGE HALL**  
**THE FORD, LITTLE HADHAM - SG11 2BP**

**MONDAY 9<sup>TH</sup> FEBRUARY 2026**

**2.00pm to 4.00pm**



**VALENTINE THEME BINGO!**

**Bring your friends and family for a fun afternoon**

**Variety of great prizes**

*Our charitable status does not allow us to give cash prizes*

**£8 per person**

**(Pay on the Door- Cash/Card)**

**Refreshments & Licenced Bar / Raffle**

**Reserve places online now.**

**[www.littlehadhamvillagehall.com/What's On](http://www.littlehadhamvillagehall.com/What's On)**

**or Phone: 07789 098071**



**A friend has suddenly fallen ill, which has made me think about getting my affairs in order. I've heard of setting up a lasting power of attorney, but i don't really know where to begin, or if i really need to, as i'm not very old.**

The first thing to know is that anyone can make a lasting power of attorney; it's not something purely for older people to consider.

Appointing a lasting power of attorney (LPA) means nominating someone such as a trusted friend or relative to act on your behalf and manage your finances, care or medical treatment, if you ever lose mental capacity. This could be because you're diagnosed with a health condition that prevents you from doing so, or something happens to you, such as an accident.

The kinds of illness which might prevent you from making decisions for yourself include: dementia, mental health problems, a brain injury, alcohol or drug misuse or the side-effects of medical treatment. Setting up an LPA doesn't mean you're expecting anything to happen, it's something you might want to do in case something happens in the future.

There are two types of LPA, property and financial affairs and health and welfare. You don't have to make both types at the same time but you must make an LPA while you are still capable of making decisions for yourself. This is called having mental capacity. Both types must be registered before they can be used and you should choose who manages your affairs for you, if you're no longer able to, very carefully.

A property and financial affairs LPA gives someone the authority to deal with and make decisions about things like buying or selling property, bank, building society

## ASK US A QUESTION...

[www.citizensadviceeastherts.org.uk](http://www.citizensadviceeastherts.org.uk)

01920 459 944

and other financial accounts, welfare benefits and debts. You can give someone power of attorney to deal with all of those affairs, or only certain things. If you want to make an LPA which only deals with certain matters, you should make sure that it's drawn up very carefully.

A health and welfare LPA gives someone the authority to deal with and make decisions about things like where you live, your day-to-day care, and your healthcare treatment - either for all aspects of your personal welfare, or only certain things. It's not possible to use a health and welfare LPA until the person who made it has lost their mental capacity.

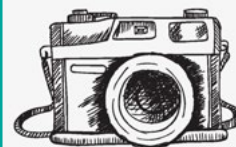
There are two ways you can make an LPA - either online at [gov.uk](http://gov.uk) or by downloading the forms from [gov.uk](http://gov.uk). There is one form for property and affairs and one for health and welfare. If you want someone to look after both aspects, you'll need two separate LPAs.

Once completed, you'll need to register the LPA by sending the forms to the Office of the Public Guardian. If you need to pay a registration fee, you'll need to send that too. If the form has been correctly completed and there are no objections after people have been notified, the Public Guardian must register it. This can take around 20 weeks.

The Public Guardian must notify you and your attorneys that they have registered the LPA, and it can then be used. You can find lots of information on LPAs and other shorter term power of attorneys by visiting the Citizens Advice website.

*Citizens Advice East Herts is here to help you; if you need advice, call our Message Line 01920 459 944 or visit [citizensadviceeastherts.org.uk](http://citizensadviceeastherts.org.uk) for our advice options. We will find out more about your problem and help you find a way forward.*

## Notices



### COVER PHOTOS

Calling all budding photographers! We are always on the look out for lovely photographs of the village for our front cover. With our new design, it no longer matters if there is a space at the top to put writing over, just something that works with the dimensions we use on our cover which is almost square.

Seasonal photos or photos of events from the village always welcome. Please send them to the editor at: [littlehadhampn@gmail.com](mailto:littlehadhampn@gmail.com)



**We're only a  
phone call away**

For survivors, friends, family,  
colleagues and professionals.  
Our team is here to listen and  
signpost you to the help you need.

**Freephone 08 088 088 088**

9am - 9pm Weekdays  
9am - 4pm Weekends and Bank Holidays

Confidential, anonymous and non-judgemental

**If you or someone  
close to you is  
dying, you can  
talk to us**

We know that facing the end of life  
can leave you feeling isolated and alone.  
The Anne Robson Trust helpline volunteers  
are here to listen and support you.

Call us on  
**0808 801 0688**

We're here for you, if you or a loved  
one are facing the end of life at home,  
in a hospital, care home or hospice.

To find out more, please visit  
[www.annerobsontrust.org.uk](http://www.annerobsontrust.org.uk)

AnneRobson  
Trust



# ★ Quiz Night ★



**SATURDAY 28TH FEBRUARY 2026**

**LITTLE HADHAM VILLAGE HALL**

**@7.30PM**

- ★ Cost £15 includes a cheese platter ★
- ★ Teams/tables up to 8 people ★ Bring your own drink and glasses ★
- ★ Raffle prizes to be won ★

Please confirm numbers no later than **25th February 2026** to  
[lhbooths@gmail.com](mailto:lhbooths@gmail.com) or 01279 771426

## S.Southgate Carpentry Services

Free Estimates with no obligation

Kitchen Fitting & Tiling

Door Hanging

Skirtings / Architraves

Wood Flooring

General DIY & Maintenance

22 Years' Carpentry experience

**07971 228735**

[s.southgatecarpentryservices](mailto:s.southgatecarpentryservices@hotmail.co.uk)

[@hotmail.co.uk](mailto:s.southgatecarpentryservices@hotmail.co.uk)



## MASKALLS TREE SURGERY

Small family business

**Big expertise  
in trees**

**Call George**

M: 07982 601 570 | T: 01279 819 127

email: [george@maskalls.co.uk](mailto:george@maskalls.co.uk)

[www.maskalls.co.uk](http://www.maskalls.co.uk)



**All types of tree care & hedge cutting undertaken.  
Call for a free estimate.**





# WHAT'S ON AT THE VENUE HUB AT MUCH HADHAM BOWLS CLUB

*bringing social events to the villages*

Much Hadham Bowling Club: Recreation Ground, Much Hadham SG10 6DL

Saturday 10th January saw the return of "Elvis" to the Hub.

Wisely he did not attempt to ape some of the gyrations of the Man himself but certainly did not disappoint.

Combined with a meal including Elvis' favourite meatloaf and raspberry crumble, and later with DJ Tony B, it was a hugely successful evening.

Sunday, 25th January Robbie Burns Lunch. A lighthearted but traditional celebration of the great man which included the Selkirk Grace, Parade and Address to the Haggis, 3 course meal with haggis from MacSweenies of Edinburgh-still to take place at the time of writing.

## FORTHCOMING EVENTS

### Sun 8th February

#### AN AFTERNOON OF FUN WITH BINGO AND A QUIZ

A fun afternoon that was hugely successful last year.

Bar opens at 2:30pm for a 3pm start

£7.50 pp

Includes a pasta bake

### Sat 21st February

#### CHINESE NEW YEAR

Celebrate the year of the Fire Horse which symbolises Energy, Freedom, Passion and Determination.

Includes excellent Chinese meal, Fortune red envelopes wishing good luck and prosperity and a virtual visit to Sha Tin, Hong Kong's racecourse to try your luck. Later with DJ Tony B

£17.50 pp

### Sunday 8th March

#### AFTERNOON BEETLE DRIVE

An enjoyable and fun event, very well received last time

Food included.

MC Pete Reed

£7.50 pp

Bar opens 2:30pm for 3pm start

## ADVANCE NOTICE

### Tuesday 17th March.

#### ST PATRICKS EVENING

GF AND V AVAILABLE IF BOOKED IN ADVANCE

FOR BOOKINGS PLEASE telephone 01279 842 637



**ARE YOUR LOCKS BEHAVING BADLY?**

We Value Old Fashioned Customer Service  
A Local Trusted Family Business Since 1989

- Specialist in UPVC & Wooden Doors
- No Call Out Charge
- No Fix No Fee
- All Work Fully Guaranteed
- 10% Senior Citizen Discount

For More Advice & Help Call Christopher:  
**07772 111 222**

[www.christopherthelocksmith.co.uk](http://www.christopherthelocksmith.co.uk)



**HERTFORD TV SERVICE**

Please call: 01992 552955

- AERIALS & SATELLITE INSTALLATIONS/REPAIRS
- TV REPAIRS (OLED, LCD, LED)
- TV WALL MOUNTING & SOUNDBARS
- WIFI SYSTEMS & DATA NETWORKING
- CCTV & WIRELESS BURGLAR ALARM SYSTEMS
- STARLINK INSTALLATIONS

[www.hertfordtvservice.co.uk](http://www.hertfordtvservice.co.uk)  
Unit 1B, Foxholes Avenue, Hertford SG13 7JG  
LOCAL FAMILY BUSINESS EST 1979  
ALL WORK FULLY GUARANTEED



**Pesteco**  
Fast, effective pest control

If you have a pest problem we have the solution!

Don't delay - Call us today

**01279 842 881 | 07773 252 000**

NPTA City & Guilds LANTARY AWARDS




**Sargies**  
Garden and Countryside Services

- Mowing
- Hedge cutting
- Seasonal Maintenance



**All Jobs Considered!**

Contact Jack Sargent  
Tel: 07500 970 212  
@: Sargies@gmail.com



**Chillermatic**  
MOBILE FRIDGE & FREEZER HIRE

We also have mobile fridge and freezer units available for hire.  
Tel: 01279 504638  
[www.chillermatic.com](http://www.chillermatic.com)  
Email: [info@chillermatic.com](mailto:info@chillermatic.com)

**N & J Westwood**  
BUILDING SERVICES

[www.nandjwestwood.co.uk](http://www.nandjwestwood.co.uk)

- Barn & Garage Conversions
- Renovations & Extensions
- Brickwork & Plastering
- Fencing & Patios

For a free quote and advice please contact John  
07886 509 722 | [info@nandjwestwood.co.uk](mailto:info@nandjwestwood.co.uk)

# THE HUNDRED PARISHES SOCIETY

KEN MCDONALD, SECRETARY

[www.hundredparishes.org.uk](http://www.hundredparishes.org.uk)



The walk descriptions that can be downloaded from The Hundred Parishes website refer to many interesting buildings along each route. Some of the larger and more ancient homes are described as hall houses, having been constructed as a communal hall with one or two wings at the side. The hall would have been heated by a log fire in the centre of the room, its smoke drifting upwards through vents in the roof.

The hall house design fell out of favour, mainly during the period 1550 to 1650 AD, when it became fashionable to install a fireplace against a wall, complete with a flue or chimney which took away the smoke and also provided an upward draft to encourage the fire to burn.

Where the flue or chimney breached the roofline, it often continued upwards as a chimney pot. In grander houses, these became fashionable accessories and a good number survive today.

During the 19th century, more and more houses had fires and now they tended to be fuelled by coal. Chimneys became narrower and their pots were less ornate. Fireplaces would be installed in multiple rooms, so houses might have several chimneys.

From mid-20th century, open fires were largely replaced by various forms of central heating and chimney

pots are not usually required on new houses. Older pots are sometimes removed before they need maintenance.

You are encouraged to look up at our surviving chimney pots, especially those from long ago. Here are some of the wonderful local examples: Badyngghams at Great Waltham; Tudor House in Newport; Cable Cottage in Puckeridge; Brook House at North End, Felsted and Stansted Hall in Stansted Mountfitchet. Not so easy to find, but on various walk routes: Moyns Park in Steeple Bumpstead, Broadoaks in Wimbish, and Dynes Cottage in Finchingfield.

Happy spotting!



*Dynes Cottage, Finchingfield.*



*Tudor House, Newport*



*Cable Cottage, Puckeridge*



*Brook House at North End, Felsted*



*Stansted Hall in Stansted Mountfitchet*



*Moyns Park, Steeple Bumpstead*



*Broadoaks, Wimbish*



*Badyngghams, Great Waltham*



## THE GARDENS OF EASTON LODGE

JILL GOLDSMITH

[www.eastonlodge.co.uk](http://www.eastonlodge.co.uk)

We have had our fingers crossed for weeks now, to have nice cold weather in January to keep the snowdrops in good shape for our Snowdrop Open Days on 15,19,22 February... and as I write they are still firmly crossed!

Volunteers have worked hard at the Gardens over the closed season so that there will be new things to enjoy on our Snowdrop Days. Visitors will see the new hedges, trees and shrubs that we have planted. And children will enjoy finding our new animal trail and learning about how these animals were special to the Countess of Warwick. We will have an even better catering offer than usual, with sausage and burger roll options as well as bacon, from the Giggly Pig and from Daisy's kiosk our volunteers will provide soup, vegetarian rolls and cakes and drinks too of course. We will have snowdrops in the green for sale and some new snowdrop merchandise too.



Tickets can be bought in advance at a discount, through our website [www.eastonlodge.co.uk](http://www.eastonlodge.co.uk) or direct through Trybooking. We look forward to welcoming you back into the Gardens.

And might we interest you in joining us as a volunteer? We are pleased to welcome new volunteers throughout

the year - for gardening/ garden maintenance work or for front of house roles and catering on our Open Days. March is a good time to start, with the air warming up and the plants putting on lots of lovely fresh growth. Why not look up our volunteer arrangements and contact us by email to [enquiries@eastonlodge.co.uk](mailto:enquiries@eastonlodge.co.uk)?



Locally based lawn care services and  
bespoke treatment programmes

# Supalawns

Professional Lawn Care

Specialists in:

● Aeration	● Weed & Moss Control
● Scarification	● Fertiliser Application
● Top Dressing	● Disease Diagnosis

## 07725 415 826

[john@supalawns.com](mailto:john@supalawns.com) | [supalawns.com](http://supalawns.com)

**Bishop's Stortford Chimney Services**



Office: 01279 771462  
Mobile: 07990 770883

- Chimney sweeping
- Stove installation
- Maintenance & repairs
- Pots & cowls fitted
- Certificates issued
- Free estimates

[bishopstortfordchimneyservices.co.uk](http://bishopstortfordchimneyservices.co.uk)  
[richard.mardell@yahoo.co.uk](mailto:richard.mardell@yahoo.co.uk)






**M Perkins  
Decorators**

**Interior & Exterior Decorating**

Established 25yrs+  
Quality Workmanship  
References Available  
Competitive Prices

**Tel: 01279-771192**  
**Mobile: 07932-928148**

Email: [contact@imperkinsdecorators.com](mailto:contact@imperkinsdecorators.com)  
Website: [www.imperkinsdecorators.com](http://www.imperkinsdecorators.com)



From the Committee may we wish everyone a Happy New Year.

The next meeting for the Society will be on **Thursday 26th February**, Much Hadham Village Hall 7:45pm for 8pm Dave Willett will be coming along to give a talk on Victorian Gothic Architecture and I am sure this will be a very interesting talk.

If anyone would like information on the Society or Meetings please do get in touch with me [katieh69@btinternet.com](mailto:katieh69@btinternet.com) for further information.

## HADHAM CROSS CONGREGATIONAL CHURCH

KATHY HAMILTON

### PREACHERS FOR SERVICES AT 11am

1st February	John Fosker	Therfield Congregational Church
8th February	Mike Hillyer	Oakwood Chapel, Harlow
15th February	Andrew Mayo	Spicer Street St. Albans (TBC)
22nd February	Roger Amos	Sawbridgeworth Congregational Church

**All are welcome to our Sunday Services at 11am.**

Our next **COFFEE MORNING** will be on **Wednesday 11th February** 10am- 12 noon. Please do come and join us for coffee/tea cake and a chat.

Our next **AFTERNOON TEA** meeting will be on **Thursday 26th February** 2pm - 4pm. Please do come and join us for coffee/tea cake and a chat.

**Church Deacons: Brenda Coleshill 01279 842 800 | Kathy Hamilton 01279 843 756**

### Friendly, Trusted, Reliable **Local Handyman Services**

All types of property maintenance work considered.

Plumbing, General Building, Carpentry, Decorating, Minor Electrics, Gardening

Enhanced DBS Vetted

**Call Mark: 07449 056 823**

Email: [HandyMarkMan@gmail.com](mailto:HandyMarkMan@gmail.com)

**TRACEY'S**  
*Travel*

Four-Seater Estate for all occasions  
Pre-Booked only

*For a reliable, personal service*

Office: **01279 843344** Mobile: **07966 392444**

Much Hadham Based

### **Luxury Toilet Hire (UK) Ltd**



Whether you are arranging a wedding, private party or corporate event, let Luxury Toilet Hire (UK) Ltd provide you with the perfect toilet facility to make your occasion a memorable success.

Tel: 01279 504638 or 01371 873003

Web: [www.luxurytoilethireltd.co.uk](http://www.luxurytoilethireltd.co.uk)

Email: [info@luxurytoilethire.co.uk](mailto:info@luxurytoilethire.co.uk)

**We also hire out mobile fridge and freezer trailers.**

### **LTH Waste Removal**

Effluent & Liquid Waste Removal



Your local service provider for all effluent and liquid waste removal including:

- Cesspits
- Septic tanks
- Klargesters and Bio disks

LTH provides a personal, professional and efficient service at a very competitive rate.

For a free quotation, and site visit if required, please call us on:

**01279 504638**

**01371 873003**

or email:

[info@luxurytoilethire.co.uk](mailto:info@luxurytoilethire.co.uk)

**Sierra HomeCare**  
Personal • Caring • Responsive



Companionship

Home Help

Personal Care

**Tel: 01279 501678**

[www.sierrahomecare.co.uk](http://www.sierrahomecare.co.uk)

CQC Registered



# FOOD FOR THOUGHT

BRENDA KAIN

Here's a new column for the Parish Magazine. The plan is a recipe each month and maybe a tip or two.

Many of you will know that I used to sell my food. During that time I used to follow recipes exactly. Now I'm far more relaxed about it all and would encourage you do the same. This recipe is one of Brian's favourites. The page in the cookery book is splattered with food marks, a sure sign of usage!

## BEEF IN HORSERADISH CREAM (SERVES 6) (GF/DF\*)

2lb (900g) braising steak cubed

2 large onions chopped

1 dessert spoon curry powder

1 tsp ground ginger

49g plain flour

450ml beef stock

2 tbs Worcestershire sauce

Salt & pepper

2 tbs hot horseradish sauce

1. Brown the beef until it has a good brown colour.
2. Remove and cook the onions in the fat until they are brown.
3. Return the beef to the pan and mix in the curry powder, ginger, flour and cook for a minute.
4. Add the stock and Worcestershire sauce.
5. Add salt and pepper and give it a good stir



6. Cook for approx 2 or 3 hours, 160C, 325F, Gas 3. (Simmering oven Aga)
7. Remove from oven and let it cool down. Then add the horseradish sauce and warm slowly again

### TIPS:

You can just put the horseradish sauce in straight from the oven but I find it gives more flavour if you cool it down.

In the spirit of 'doing your own thing' I sometimes add carrots and celery at the beginning of the recipe. It also tastes very good if you add roasted parsnips towards the end of cooking.

For the cake and quiche bakers amongst you, do you know about Nancy's lining paste. Brushed into your tin ensures that the cake/quiche will loosen from the tin and not stick. Nancy Birtwhistle is the lady in question. She won the GBBO some years ago and her books are full of useful tips.

Equal quantities of vegetable shortening (eg Trex) plain flour and vegetable or sunflower oil).

Mix the flour and shortening and then stir in the oil until you have a loose paste. Store in a jar in the fridge for up to 3 months.

\*check the label on the horseradish sauce if making this Gluten Free and Dairy Free



But we can and we are here to help.

Victims of domestic abuse in more rural areas are often unprotected and isolated from help. A 2019 report\* into domestic abuse in Yorkshire highlighted a number of shocking facts, including that the more rural the setting, the higher the risk of harm to the victim.

If someone you know is causing you harm or distress – or if you are worried about a family member or friend – you can call or email us in confidence for help and advice on your options.



**Herts  
Domestic  
Abuse  
Helpline**

**08 088 088 088**

[hertsdomesticabusehelpline.org](https://hertsdomesticabusehelpline.org)

**Call freephone 08 088 088 088**

Monday to Friday: 9am-9pm Weekends: 9am-4pm

Or confidential email: [kim@mailpurple.org](mailto:kim@mailpurple.org)

Follow us

[@HertsDomesticAbuseHelpline](https://www.facebook.com/HertsDomesticAbuseHelpline)

[@HDA\\_Helpline](https://twitter.com/HDA_Helpline)

[@hdahelp](https://www.instagram.com/hdahelp)

Registered charity no. 1184899

\*Captive and Controlled, commissioned by Julia Mulligan, Chair of the National Rural Crime Network & Police, Fire and Crime Commissioner for North Yorkshire.

Family Business Established 1968

**Oil Boiler Servicing,  
Repairs, Commissioning  
and Oil Lines Specialist**

Recommended by most manufactures, specifically Grant. We carry all parts for all oil boilers for immediate same-day repairs. Fully skilled engineers, regularly trained to meet current manufacturers' requirements.

Visit our website for more information on us and related trades, plus our recommendations for plumbing, oil tank installations and chimney sweeping.

[www.jordanoil.co.uk](http://www.jordanoil.co.uk)

Office: 01438 355 583

Robert Jordan: 07831 364 607

[jordanoilburner@gmail.com](mailto:jordanoilburner@gmail.com)

**STEPHEN CHAPMAN**

Boiler Man

OFTC REGISTERED

Servicing, Repairing &  
Commissioning Oil Fire Boilers  
Contact Julie in the office on –  
07519 721643 or 01438 233612  
Email [steveoilboilers@gmail.com](mailto:steveoilboilers@gmail.com)  
[www.stephen-chapman.co.uk](http://www.stephen-chapman.co.uk)



25-year guarantee to all new pitched roofs  
and a 15-year guarantee on all new flat roofs  
Free no obligation quotations

- Flat Roofing Repairs, Cement Work, Lead Work, Chimneys
- Facias, Gutters & Soffits, VELUX installation, Emergency call out service
- Pitch Roofs, Tiling, Slating

Tel: 07852 576 194

Email: [sales@dsparwellroofing.co.uk](mailto:sales@dsparwellroofing.co.uk)

*Stansted's  
Best Kept Secret*

**Gallery @  
MOUNTFITCHET**

Paintings by  
Anne McCormack RI SWA

Viewing details & opening times visit:  
[annemccormack.com](http://annemccormack.com)

**REBOOT**  
IT SOLUTIONS

**Computer HELP**  
**In your Own Home**



**Contact Tracy**  
**07521 977 997**

[www.rebootitsolutions.co.uk](http://www.rebootitsolutions.co.uk)

**RURAL RAMBLINGS**  
CHERRY MARDELL

Honestly, things are not looking good....I am becoming difficult, short tempered and exceedingly forgetful. It made me think of that Winnie the Pooh story (which, by the time I had written this paragraph, I had forgotten which Pooh story I was referring to!).

We all expect to lose some of our brain power when we are kicking really old, but it still comes as a shock when it is your brain power! You can consume boxes of pills and potions in the hope of retaining some semblance of a memory, but, truth to tell, it is going to happen to some of us regardless of whatever we do!

So I have TWO calendars in the kitchen, which, hopefully remind me of what I had planned for the coming days. And I still need a verbal reminding on the day! I remember with sadness my Dad's difficult last couple of years, which were difficult for that very same reason....he was happy, but his memory had deserted him. For a man who had prided himself on his business acumen, his inability to continue his old life was sad to see. But the upside was that we found a lovely family who took him in (obviously for payment), and treated him as one of their family for his last year. And before you ask why I didn't volunteer, I can only admit that I could never have done such a good job!

And I remember my Dad being happier than I ever saw him before!

**WOULD YOU LIKE TO BE  
ADVERTISING HERE?**

Reach over **500 households every month**, (we don't take a break like many other local papers, we publish 12 issues per year, rain or shine!) plus we give our advertisers the opportunity to write an editorial piece to introduce your business to the village.

Prices start from just £11 per issue for an 1/8th page ad, this size (1/4 page) is £17 per issue or £170 for the year as there is a discount for taking out an ad subscription for a year (12 for the price of 10).

Please contact the editor for details: [littlehadhampn@gmail.com](mailto:littlehadhampn@gmail.com)

LITTLE HADHAM VILLAGE HALL - SG11 2BP

Book online: [www.littlehadhamvillagehall.com](http://www.littlehadhamvillagehall.com)

**Afternoon  
Tea & Music**

Featuring contemporary  
live music performed  
by Jenny Salmon

**Monday**  
**20<sup>th</sup> April 2026**  
**2pm to 4.30pm**

**Tickets £20**  
**per person**  
Now available to book  
via our website

All proceeds towards  
village hall maintenance  
projects





# PARISH SERVICES FEBRUARY 2026

BENEFICE OF: LITTLE HADHAM | MUCH HADHAM | ALBURY

Date	Day	Church	Service / Event	Time
01-Feb	Sunday	St Mary's Albury	The Presentation (Candlemas)	9.15am
		St Andrew's Much Hadham	Evening Worship	5 - 5.30pm
08-Feb	Sunday	St Andrew's Much Hadham	2nd before Lent	9.15am
<b>15-Feb</b>	<b>Sunday</b>	<b>St Cecilia's Little Hadham</b>	<b>Sunday next before Lent</b>	<b>9.15am</b>
18-Feb	Wednesday	St Andrew's Much Hadham	Ash Wednesday	7:30pm
22-Feb	Sunday	St Andrew's Much Hadham	Lent 1	9.15am
<b>26-Feb</b>	<b>Thursday</b>	<b>St Cecilia's Little Hadham</b>	<b>Midweek BCP</b>	<b>10am</b>

## PLEASE NOTE: CHURCH SERVICE DATES ARE CHANGING AT ST.CECILIA'S

From 1st January 2026 the church services in the benefice of Albury, Little Hadham and Much Hadham will be held on fixed Sundays every month.

St. Mary's Albury, on the 1st Sunday, St. Andrews Much Hadham, on the 2nd and 4th Sunday's and **St. Cecilia's Little Hadham on the 3rd Sunday**, all 5th Sunday services are held at St. Thomas Perry Green. All the services start at 9:15am.

You can support your Church by coming to the service on the 3rd Sunday, we would love to see you.

### DONATING TO ST. CECILIA'S

As well as the Parish Giving Scheme, cheques and cash, we have now caught up with modern technology and have Contactless Giving in the Church. You can also donate via our QR code. — Thank you.



# ALL ARE WELCOME TO JOIN OUR SERVICES