



# LITTLE HADHAM PARISH NEWS

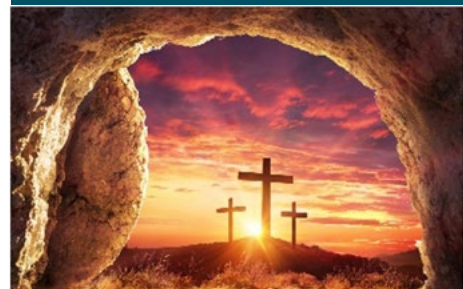
APRIL 2024

## **Free Hedge Plants from the Woodland Trust**

It stopped raining in Little Hadham just long enough for a group of children and parents from Little Hadham Primary School and a couple of members of our Community Orchard group to plant around 100 new hedge plants! See p.5

# Letter from our Area Dean

Father Simon Vivian



the preaching of the Church over two millennia has been false and Christianity is baseless, offering no hope at all.

In fact, if the resurrection is a myth, we'd have to conclude that Jesus wasn't even a very good teacher because his claims about himself would also be untrue. Perhaps he genuinely believed them, even though they turned out to be false, or maybe he was delusional. Or perhaps he wickedly set out to deceive people. In any case, he wouldn't be the ideal role model the Church proclaims.

But let's flip all this on its head. What if Jesus actually did rise from the dead? That would be truly remarkable, wouldn't it? That would be against the grain of everything we know. It would completely change our perception of the world. It would mean that life has been able to triumph over death and that there is more beyond what we see at the end of this mortal life.

It would mean that this man Jesus, who claimed to be bringing God's kingdom to earth, should be listened to. It would mean that God in Jesus did walk among us in first century Israel, sharing our struggles, our weaknesses, and our mortality. If Christ's resurrection really did happen, it means God hasn't left us alone in a meaningless world, but has turned the world upside down so as to bring us closer to him.

The idea of resurrection may seem unbelievable. But one thing is for sure: whether it's true or not is of the utmost significance to us all.

With Easter blessings,

*Fr Simon*

It's Easter, so let's have a seasonal thought experiment. Imagine if Jesus hadn't risen from the dead.

What would that mean for us? Does it have any significance at all?

At the time, it might have been acknowledged that he was a compassionate person and a wise teacher. Some might have considered him courageous to die for his beliefs - though many more would surely have considered him foolish. But the chances are we'd never have heard of him. After all, the historical records suggest there were others who gained similar renown.

Most of all, for us, it would mean that if death did conquer him - just like it does for all of us - he wouldn't be our saviour - the conqueror of death and sin. He wouldn't be the one who gives us the opportunity to accept eternal life in the presence of God. In fact, Jesus wouldn't have been God incarnate, living among us as one of us; God's very presence with us. He would, instead, simply have been a good man.

St Paul conducted this same thought experiment and came to the conclusion that "if Christ has not been raised, then our proclamation has been in vain and your faith has been in vain... If Christ has not been raised, your faith is futile". (1 Corinthians 15:14,17). In other words, if Jesus' Easter resurrection didn't happen,

## LITTLE HADHAM PARISH NEWS

Rector of the Parish:

Vacant

Administrator to the Rector:

01279 842 609  
muchhadhamrectory@gmail.com

Churchwarden:

Karin Green  
01279 771 532  
churchwardenstcecilias@gmail.com

Editor:

Anne Wright  
littlehadhampn@gmail.com

To find out more about the life of our Church, please visit our website:

[www.riverashchurches.org.uk](http://www.riverashchurches.org.uk)

### EDITORIAL DEADLINE

All articles for inclusion and payment for advertising in the next issue **must** be received by the **15th** of the month.

(BACS preferred, email the editor for details.)

Editor reserves the right to edit copy received, and add or omit pictures where necessary.

View the Parish News Online including back issues: [www.littlehadham-pc.gov.uk/parish\\_news.html](http://www.littlehadham-pc.gov.uk/parish_news.html)



**From the Registers of St. Cecilia's Church, Little Hadham**

No entries for the registers this month

## ADVERTISING ENQUIRIES

If you would like to advertise in our magazine, please contact the editor at: [littlehadhampn@gmail.com](mailto:littlehadhampn@gmail.com) for more details.

The Parish News is funded and distributed freely by St Cecilia's Church. We really appreciate the support of all our advertisers to help cover our overheads and keep the Parish News in print. Please support them and shop local.

So if you run a business or service and would like to invest in your local magazine and reach over 500 homes each month with your product or service, we'd love to hear from you.

We offer ads at 4 different sizes and prices from a full page to an eighth of a page, with discounts for taking a year at a time. We can also insert flyers for a small fee.

You can also offer support by making a donation to the magazine, contact the editor for details.

The magazine is written by many contributors who report for themselves or for a club or organisation they represent. The church and production team does not necessarily agree with the opinions aired in any article printed here.

# Little Hadham Parish Council

Carole Page

www.littlehadham-pc.gov.uk

Little Hadham Parish Council meets the first Tuesday of each month in the Village Hall. There is no meeting in August or January. All residents and press are welcome to attend the meetings.

## Meeting dates – all meetings commence at 7.30pm

2nd April	7th May	4th June	2nd July
3rd September	1st October	5th November	3rd December

Agendas are posted on noticeboards and the Little Hadham Parish Council website.

## SAVE THE DATE – TUESDAY 7th MAY. LITTLE HADHAM PARISH ASSEMBLY

*Which will be in the Village Hall with stalls from local groups and external agencies. With presentations on what has been happening in the village and what is coming up. Come along for a catch up with people you may not have seen for a while, whilst enjoying some refreshments.*



## Flooding in Little Hadham

Two years on from completion of the Little Hadham Bypass and Flood Alleviation Scheme, we thought it would be a good time to reflect on flooding in the village. The general consensus seems to be that the flood alleviation scheme is working. In recent weeks it has been apparent that the flood storage areas alongside the bypass are holding huge volumes of water which would otherwise be flowing down the River Ash and through Little Hadham.

Despite a very wet Autumn and Winter, as far as we are aware there has been no damage to property as a result of flooding.

However, it won't have escaped the notice of villagers that flooding on The Ford seems to be an almost weekly problem at the moment. This is a separate issue to that which the flood alleviation scheme sought to remedy in that the cause of this flooding is not too much water in the river, but put simply, the water cannot get to the river quickly enough. Water is running down from the agricultural fields taking significant levels of silt with it which is causing blockages in the drains on The Ford and the drains, ditches and gullies which seek to take the water to the river are seemingly not fit for purpose. Residents are working closely with Hertfordshire County Council to find a solution to this problem, and this is something which the Parish Council are keen to support. In the meantime, the residents in conjunction with the Parish Council politely request that vehicle users on The Ford are mindful of the impact that driving through the floods at speed has - the faster you go, the bigger the wave pushed onto people's properties is!

## Little Hadham Wassailing – with the Chiltern West Gallery Quire

Saturday 14th March, started at the Nags Head pub at 2pm. The Quire



led the procession to the Community Orchard, joined by a good number of people with saucepan lids, wooden spoons, and many other eclectic items to make noise with. The wassailing, or blessing of the fruit trees, involves drinking and singing to the health of the trees in the hope that they will provide a bountiful harvest in the autumn.

## Hedge Planting

On Saturday 9th March it stopped raining (hurray) just so that we could plant the free hedge plants from the Woodland Trust!! With a gang of children and parents from



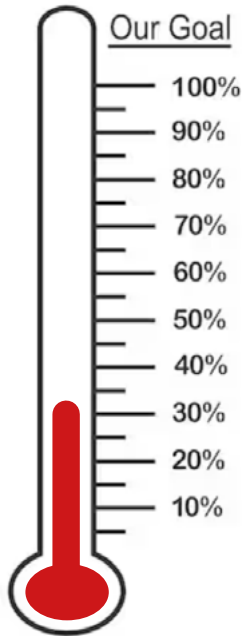
Little Hadham school and a couple of members of the Community Orchard group we managed to plant around 100 little hedge plants in no time at all. It was great to see the children so involved and enjoying running around burning energy as well as the parents finding out where the orchard is and getting to know each other. A very enjoyable morning!



clerklittlehadham@gmail.com 01920 870 809 | 07825 011 975

# Church Roof Fund – Update

Helen Walker



The Church Roof Fund has now reached the fantastic sum of £3,210, in only 3 months, and at the end of the tax year in early April we will also be able to add the Gift Aid amount of £665, which is a phenomenal response from all of you generous donors – we cannot THANK YOU enough!

The virtual tower of coins continues to grow – s...l...o...w...l...y – so please do keep dropping those 10p coins into the collection box in Church at any time.

Hopefully you all managed to sample some of the delicious cakes and savouries on offer at the Cake Sale on 16th March but, if not...keep watching this space, as there will be future opportunities.

This month we will be submitting an application to Tesco for a place in the Stronger Starts initiative, so if we are lucky enough to be selected, please do support us by dropping a blue token into the St Cecilia's Church Roof Fund slot every time you shop. To coin a phrase 'Every Little Helps'!

If there are any more donations out there, please do remember that UK tax payers can Gift Aid any donations, which will boost the fund by adding 25% to the amount you pledge to the Church Roof Fund. It is really as easy as ticking box and signing a form - please contact Karin Green (Church Warden) for a declaration form [churchwardenstcecilias@gmail.com](mailto:churchwardenstcecilias@gmail.com), tel. 01279 771 532.

If you have any fundraising ideas of your own, we would love to hear from you.

Contact us at:  
[churchwardenstcecilias@gmail.com](mailto:churchwardenstcecilias@gmail.com)  
or call on **01279 771 532**

**TRACEY'S**  
*Travel*

Four-Seater Estate for all occasions  
Pre-Booked only

*For a reliable, personal service*

Office: **01279 843344** Mobile: **07966 392444**  
Much Hadham Based

**D.SPARWELL**  
ROOFING

25-year guarantee to all new pitched roofs  
and a 15-year guarantee on all new flat roofs

Free no obligation quotations

- Flat Roofing Repairs, Cement Work, Lead Work, Chimneys
- Facias, Gutters & Soffits, VELUX installation, Emergency call out service
- Pitch Roofs, Tiling, Slating

Tel: 07852 576 194 Email: [sales@dsparwellroofing.co.uk](mailto:sales@dsparwellroofing.co.uk)

**MOWTIVATED**  
TREE SURGERY & GROUNDS MAINTENANCE

**AVAILABLE FOR:**

- Crown Reduction/Thinning - Tree Removal
- Pollarding - Felling - Site Clearance - Fencing - Grass & Hedge Cutting - Contract Maintenance

**CALL OR TEXT FOR A FREE QUOTE**

Tom Cottam  
TEL: 01279 850257 MOB: 07834 785716  
[@MOWTIVATED.TC](http://@MOWTIVATED.TC)



Louise Battle  
[www.woodlandrangers.co.uk](http://www.woodlandrangers.co.uk)



Woodland Rangers are happy to announce that they are opening an exciting, brand new forest school experience in Little Hadham.

Nikki and Louise have worked hard over the last year, training to become forest school leaders, and are now ready to launch at Easter, starting with a holiday club for primary school aged children.

Woodland Rangers will be based in Millennium Woods, a wonderful community asset. They aim to encourage more parents and children to connect with nature and enjoy our beautiful local woodlands.

They will offer a range of sessions from baby groups, pre-schooler stay and play sessions, home educated children, birthday parties, holiday clubs and more!

Activities will range from den building, nature crafts, and playing in the mud kitchen, to having the opportunity to engage in supported risks such as fire lighting, tree climbing and using tools safely.

At their stay and play sessions, parents and carers will also enjoy the benefits to their mental and physical wellbeing by being outdoors in the fresh air, having a cup of tea or coffee and meeting and making friends with other local parents.

*To find out more, please visit [www.woodlandrangers.co.uk](http://www.woodlandrangers.co.uk) or find them on Facebook @woodlandrangersuk*



100 YEARS  
**WOOD BROS**  
 ENGLAND 1924

**\*FACTORY SALE**  
**30th May to 1st June**



**UPHOLSTERY | CABINET | FABRIC | REFURBISHMENT**

Come and visit our Ware showroom to see a huge range of our bestselling cabinet and upholstery

**Old Charm**

**Harris Tweed**

Choose from a wide selection of upholstery designs in tweeds, velvets, leathers and more...

**Online [woodbros.co.uk](http://woodbros.co.uk)**

**Showroom in Ware**

Marsh Lane, London Road, Ware, Hertfordshire, SG12 9QH  
 01920 469241 Terms and Conditions see instore for details



## High quality creative education for children from 3-11

Emphasis on nurturing each child as an individual.

Care provision from 7.45am to 6.00pm including excellent all day nursery.

“ A positive active ethos that strives for excellent personal and academic development. ”

By far the best way to find out about a school is to visit it.  
Please phone us on 01279 771285 to make an appointment.



**Rachel's Pooch Pals**  
DOG WALKING SERVICES

*I'm Rachel!*

"Rachel is reliable, kind and has so much love for my pup just like he is her own, we're so thankful we found her!"  
-Shelby, Rachel's Mum

*I'm Rachel!*

**Hello. I'm Rachel!**

**Your local Dog Walker**

I'm here to help with your Pooches.

I offer dog walking, doggy day care, pop in and play & sleepovers!

Get in touch to see how I can help you.

*I'm Rachel!*

"We are so lucky to have Rachel! We know our pooch is in safe hands when we are away! She looks after him as if he is her own!"  
-Rebekah, Rafe's Mum

**Fully Insured Dog Walker**  
Canine First Aid Trained

*I'm Rachel!*

**Got in touch today:**

RACHELSPOOCHPALS@GMAIL.COM  
MOBILE: 07753182561  
RACHELS POOCH PALS  
@RACHELSPOOCHPALS

SCAN ME

# Little Hadham Primary School

Sinead Connolly, Head Teacher



Little Hadham Primary School



What an incredibly busy and enriching few weeks back after the half term at Little Hadham Primary School! We've had a whirlwind of learning opportunities, and it's been heart-warming to see so much enthusiasm and engagement from our children.

From hands-on activities like clay sculpting, coding sessions, maths challenge and tree climbing to creative expressions through singing and performing, our curriculum has truly embodied a balance of academic rigour and practical, creative, and physical skills.

On World Book Day, the atmosphere at Little Hadham Primary was brimming with excitement and creativity as everyone had the chance to dress up as a word. The school buzzed with anticipation as students and staff alike embraced this year's theme with enthusiasm and imagination. The whole school took part in a vocabulary parade assembly. It was definitely a sight to behold, with each participant bringing their chosen word to life in unique and inventive ways- what a creative bunch we are!



Here at Little Hadham Primary, we strongly believe that small actions can lead to big changes, especially when it comes to caring for our environment. That's why our Green Team has been hard at work crafting our Eco Mascot from recyclable materials. This mascot will serve as a symbol of our commitment to the environment and will play a key role in educating and inspiring our pupils about sustainability.

The National Gallery brought their expertise on art to some of our classes. The workshops were delivered via Zoom (one of the gains from Covid19), and the aim was to develop children's skills in communication, creativity and dexterity. The children had fun exploring sketching skills and colour mixing and they learned how to use different techniques to create their own work. What a lovely way to spend an afternoon learning, merging education with enjoyment and artistic expression!



OTHER PRODUCTS TOO! JUST ASK



OVER 25 YEARS OF QUALITY SERVICE

CONSULTATION \* INSTALLATION  
RENOVATION \* PERSONAL SERVICE

andrewbanks.co.uk  
01279 626389

**Chillermatic**  
MOBILE FRIDGE & FREEZER HIRE

We also have mobile fridge and freezer units available for hire.  
Tel: 01279 504638  
[www.chillermatic.com](http://www.chillermatic.com)  
Email: [info@chillermatic.com](mailto:info@chillermatic.com)

Facebook icon | Twitter icon

**Pesteco**  
Fast, effective pest control

If you have a pest problem we have the solution!

Don't delay - Call us today

01279 842 881 | 07773 252 000

NPTA member | City of Guilds Qualified | LANTRAY AWARDS APPROVED



# Gravelly Barn Art Exhibition

www.gravellybarn.com

Chris & Jane Davalle

## A chance to explore your artistic talents and raise money for charity.

Sales of blank canvases for our charity 12-inch Canvas Exhibition at the EJD studio at Gravelly Barn, Braughing, in July are going really well. BUT we still have plenty more to tempt all you artists (and friends and family) out there.

You can buy a canvas for £10 and create your masterpiece using any medium you like, from paint, watercolour, charcoal, pencil, and crayon to needlework, collage, photography, sculpture, tapestry... the choice is as wide as your imagination. The only stipulation is that your work must remain within 12 inches square.

Completed canvases will be put on display at the exhibition in July and offered for sale at £50 each. All the money raised will be going to charity. This year our chosen charities include: the Princess Alexandra Hospital Breast Unit at St Margaret's Hospital, Epping, and the Head and Neck Cancer Foundation.

**Completed canvases must be returned by June 21** and everyone submitting a completed canvas will be invited to a special private view.

The exhibition will be open on **Friday July 19 to Sunday July 21 and Saturday and Sunday July 27 -28**. Teas, coffees, cakes and refreshments will be available on all days and there is ample free parking.

Further details can be found on our website [www.gravellybarn.com](http://www.gravellybarn.com). Also have a look at photos of our past exhibitions on the website - it might give you some inspiration.



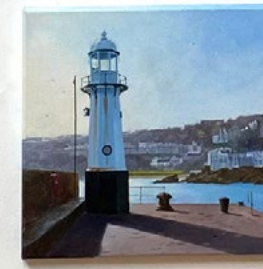
Please join us in taking part, either by buying a blank canvas or coming along to the exhibition in July. We look forward to hearing from you.

If you would like to buy a canvas, please contact:

**Jane Davalle**  
jdavalle@aol.com  
07905 184 619

or

**Glynnis Bainbridge**  
glynnisb2910@aol.com  
07711 611 282



# Little Hadham Gardening Club

Anne Willett

There is no meeting in April, so our next get together will be on **Tuesday 14th May** when we will have a talk by Ed Fairey from the NGS. Doors open at 7.45pm with an 8.00pm start.

Our plant sale this year us on **Saturday 18th May at 9.30am**, so please



*Hydrangea paniculata 'Limelight'*

pot up some extra plants when dividing your perennials in the next few weeks

## How to prune a hydrangea in Spring:-

Pruning prevents hydrangeas become woody and congested, and channels the plants energy into producing strong growth and large blooms. After pruning, mulch the plant with well rotted manure or compost.

Different types are pruned in different ways, as some flower on old wood, some on new. Pruning incorrectly will affect the flowering.

Mophead and Lacecap hydrangeas (*Hydrangea macrophylla*) flower on the previous year's growth. In April remove old flower heads to just above a pair of buds. Cut out any thin, weak stems around the base

of the plant and remove one or two if the largest, oldest stems from as low down as possible to promote new shoots from the base. These will grow over the next few years and carry blooms in the future.

*Hydrangea aspersions*, *H. Quercifolia* and *H. serrata* are also lightly pruned in Spring in a similar way.

*Hydrangea paniculata* and *H. aborescens* produce flowers on new wood, which means that you can cut them back harder without losing this year's flowers. Pruning is not essential but left unpruned the plant will get taller, with most flowers at the top. Cut back to a healthy framework between 30cm and 60cm. Prune to just above a pair of healthy buds for big flowers or less hard for a natural look or a taller plant.



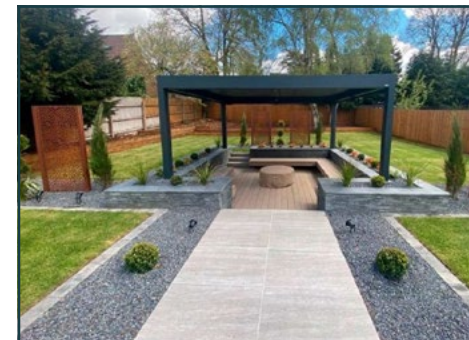
## Somnium

Bespoke contemporary water features

- Finishes include steel & aluminium
- Built-in eco filtration designed by us

01279 771 084

[www.somniumdesign.co.uk](http://www.somniumdesign.co.uk)



## Willow Landscaping

Garden Design & landscape builders

- Patios
  - Planters
  - Raised beds
  - Steps
  - Paths
  - Grading
- Design drawings from £350 + vat

01279 771 084

[www.willow-land-scapes.co.uk](http://www.willow-land-scapes.co.uk)



For all your gardening requirements  
Call CJ Gardening 07713 790545

For a reliable, conscientious and trustworthy service. Choice of male or female gardeners. Customer recommendations available.

Pruning - Planting - Weeding - Fencing -  
Jet washing - Seasonal tidy ups

Call Johnny on 07713 790545 for a friendly chat about your requirements.

## Supalawns

Professional Lawn Care

Locally based lawn care services and bespoke treatment programmes

Specialists in:

- Aeration
- Scarification
- Top Dressing
- Weed & Moss Control
- Fertiliser Application
- Disease Diagnosis

Professional, safe and efficient pest solutions:

- Lawn Pests
- Moles
- Rats & Mice
- Bees & Wasps



+44 (0) 7725415826 | [info@supalawns.com](mailto:info@supalawns.com) | [supalawns.com](http://supalawns.com)



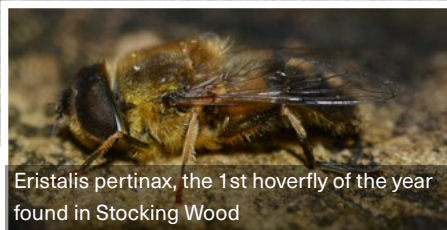
# Ongoing Work in Millennium and Stocking Wood

Jono Forgham

jonoforgham@gmail.com



Millennium Wood clearance completed



*Eristalis pertinax*, the 1st hoverfly of the year found in Stocking Wood

With spring now upon us I have completed all work in both Stocking and Millennium Woods. This work will resume in the autumn when the breeding season has concluded.

In Millennium Wood, a work party on the 3rd March completed the clearance of bramble and intrusive Blackthorn. Thanks to all those who came along to help. Plenty achieved. The pond in the wood is full to the brim and whilst working there last week, I was joined by several inquisitive Goldcrests.

I continued to clear the ride in Stocking Wood until the middle of March. Plenty of trees bordering the ride have been felled to permit more light to penetrate to aid the low growing vegetation.

I also continue to record all aspects of wildlife here and passed 1000 species at the beginning of March. Still plenty to find, identify and record. A nationally scarce spider, *Ballus chalybeius*, was a pleasing find on 11th March. A tiny spider, 4mm in length and one of the Jumping spiders.

In both woods I shall now be concentrating on recording everything that I encounter, including running my portable moth trap regularly on warmer nights. So far, since March 2023, I have recorded over 320 moth species for Stocking Wood, showing it is indeed, a superb habitat for wildlife.



Stocking Wood ride in September 2023



Stocking Wood ride in March 2024



PROTEA  
SKIN & BEAUTY

SKIN AND BEAUTY CLINIC  
BASED IN CHURCH END, LITTLE HADHAM

- Advanced Skin Treatments
- Medical Grade Skincare
- Beauty Treatments

Open Monday-Saturday By appointment only

07507 271 508 | info@proteaskinandbeauty.co.uk | @proteaskinandbeauty



Promoting Independence. Lessening Isolation.

- Local team supporting elderly people
- Companionship in your home
- Practical help with day to day living
- Personal, tailored and flexible support

Carolyn Westlake 07827 331 987



STORTFORD PARK PHYSIOTHERAPY

Based at Wickham Hall CM23 1JG

Contact us for appointments  
or information

Tel: Diana 07506 693 158

Email: dianastortpark@gmail.com

Web: stortfordpark.physio

REBOOT  
IT SOLUTIONS

Need a helping hand?

We provide a wide range of IT services and solutions all tailored to your individual needs.

From system set up and virus management to repairs and up skilling on the latest technology.

Offsite and home support available.

Tracy Walker - IT Consultant

07521 977997

www.rebootitsolutions.co.uk



East Herts

www.citizensadviceeastherts.org.uk

01920 459 944

**I've just got my first payslip from a new job, I'm slightly embarrassed to say I don't understand what all the different sections refer to. How do I know what each means and if it's correct?**

Congratulations on the new job, hopefully you're settling into the new role. There's no need to be embarrassed about not understanding your payslip, it contains lots of information which can be tricky to get your head around but it is important to understand. Your payslip shows your pay, deductions and tax information.

All employers are required to give their employees a payslip and it's a good idea to keep them for as long as possible. The top left corner of your payslip is where you'll usually find your employer's details. Opposite this, in the middle or top right corner, should be your details. This is also where you might find your payroll or employee number, this is what your employer uses to identify you for payroll purposes.

Next, you'll see lots of different numbers and codes. The payment date is when your pay will normally arrive in your bank account, it can be monthly or weekly and fall on any day of the month.

Your National Insurance (NI) number refers to your unique number. You must have a NI number to work in the UK. It's used to make sure all your NI contributions are recorded and so you can get any state benefits you're entitled to, including state pension later in life.

Your payslip might show a tax period, the tax year starts in April and ends in

March. The number here corresponds to the period in which you're being taxed, eg. if you're paid monthly, 01 will represent the tax period in April, while 12 would mean March.

Next is your tax code. This is decided by HM Revenue and Customs (HMRC) and is used by your employer or pension provider to work out how much Income Tax to take from your pay. Your tax code is made up of several numbers and a letter. The numbers refer to how much tax-free income you get while the letters can mean different things depending on your circumstances. You can find out what they mean on the government website. Make sure you're not on an emergency tax code otherwise you'll be taxed more than needed.

Now to your pay and deductions. Gross pay, means how much you've earned before anything is deducted. Deductions are amounts taken from your gross pay, common ones include: income tax, national insurance, pension or student loan payments. Income tax is the tax you pay on your earnings to fund public services, this is something you have to pay but the amount will vary depending on your earnings. You pay National Insurance so you can be entitled to certain benefits, and it also contributes towards the NHS.

*If you need advice, the quickest way is to call our Message Line 01920 459 944 anytime (we aim to return calls within 24 hours, except weekends) or visit [www.citizensadviceeastherts.org.uk](http://www.citizensadviceeastherts.org.uk) for our advice options.*

# Little Hadham Village Hall News

Jan Williamson

www.littlehadhamvillagehall.com



At last spring is here (I hope) and I have some good news!

I met a lovely lady called Tracy from Waitrose in Bishop's Stortford who was keen to hear about the range of activities that take place in the hall. She then invited me to apply to the give a little love funding. Amazingly within one week we received a sum of £1000 from John Lewis Partnership/Waitrose Bishop's Stortford to support our activities especially those with an educational value. This fitted in perfectly for a new idea which has emerged from our monthly Air Fryer demonstrations.

With these demonstrations having taken off well beyond our expectations we could now see an opportunity to work with smaller groups to match people with similar levels of knowledge and experience. The village hall has three different types of air fryer which can be used by these groups so they can then try out different models as well as giving the chance to be more interactive in the

preparation and cooking processes. Tasting the food is all part of the fun and confidence building when trying out new recipes and ideas. I have my first group of six that have signed up but I now am looking for people who have yet to try air frying. I hope to start the group soon after Easter.

## Increasing numbers

We have recognised that over the past few weeks the numbers of people coming to the café on Wednesdays are increasing. We have also had pop-up service providers such Citizens Advice and the very welcome presence of Hertfordshire police and the Bishop's Stortford Fire Safety Team who have come along to talk to our customers.

We have now introduced a full cooked breakfast to our menu which is now available when the café opens at 10am. We do not have a set price list so we do rely on your donations to help cover costs. Hot and cold food is served throughout the opening hours of the café which are 10am – 2pm.

## Neighbourhood Police Team

The team are coming to the village hall on **3rd April at 2.30pm** to give a presentation on HollieGuard – which is a personal safety app.

HollieGuard tracks a person's location as they make their way home, as they're out jogging or cycling, or simply going about their day-to-day tasks. If they feel unsafe, all they need to do is shake their phone which sends an alert to a group of contacts to warn them that they may be in danger.

If you want help with downloading this app onto your phone please bring it along on the day and we will have plenty of volunteers ready to help you download it. This is for your safety and is well worth attending.

## Little Hadham Village Hall Management Committee AGM

**30th April at 7.30pm** in the main hall. This meeting is open to the public and everyone is welcome. We have some vacancies on our Management Committee so we are looking for new people to come and join our the committee and become a trustee. If you think this is something you could get involved with we would love to hear from you before our AGM. Without a full team of trustees the village hall cannot survive! Please help us to keep this vital community asset alive and thriving.

Happy Easter!

If you would like to know more about anything in this article please phone Jan Williamson on: 01279 771 272 or email: [chairvillagehall@littlehadham.org.uk](mailto:chairvillagehall@littlehadham.org.uk)

## CUPPA WITH A COPPER!

WHAT'S BREWING IN YOUR COMMUNITY?

Come and meet your local Safer Neighbourhood Officers!



**WHEN:**  
**WEDNESDAY 3rd APRIL 2024**  
**at 2:30pm**

**WHERE:**  
**LITTLE HADHAM VILLAGE HALL**  
**WARM WELCOME CAFÉ**



### CUPPA WITH A COPPER

Giving local residents & businesses an opportunity to discuss policing & community matters in a less formal environment.

#### Why Come Along?

- **HOLLIE GUARD PRESENTATION**
- **Get free crime prevention advice**
- **Have an informal chat with your friendly neighbourhood officer**

# What's On in April @ LH Village Hall

See website [www.littlehadhamvillagehall.com](http://www.littlehadhamvillagehall.com) for latest details

## WEEKLY ACTIVITIES

### MONDAY'S

Mum's Matter (Mother & Baby Group) 10 – 11:30am

### TUESDAY'S

**Brownies** 5:45 – 7pm **Term Time Only**  
**Bereavement Group Meeting** Every THIRD Tuesday of the month (1-1 every other Tuesday from 10am - 12:15 BY APPOINTMENT ONLY ring Jan 01279 771 272)

### WEDNESDAY'S

**Welcome Cafe** 10am – 2pm No need to book just drop in and enjoy!  
**Chair Yoga** 11am – 11:45 Mark Druman 07368 293 062  
**Digital Improvers drop in** 2 – 3:30pm Jan 01279 771 272  
**Fitsteps** 6 – 7pm Jacqui: 07731 454 228

### THURSDAY'S

**Mike's Bowls Club** 2 – 4pm

### FRIDAY'S

**Fancy Feet** children's dance class 4 – 5:30pm **Term Time Only** Hannah 07538 262 835  
**Indoor Bowls** 7:30 – 10pm **except 2nd Friday**

## FORTNIGHTLY

**Tuesday 9th & 23th** 2 – 4pm Turn up & Play Scrabble (£3 per session) Annette: 07926 088 202  
**Wednesday 3rd & 17th** 12:30 – 1:30pm Tai Chi (Sarah Baker 07740 701 102)  
**Wednesday 10th & 24th** 12:30 – 1:30pm Virtual Cycle Studio Adam Howard 07538 706 560

## MONTHLY

**2nd** 7pm Parish Council Meeting  
**8th** 7 - 9pm Air Fryer Demonstration (1st Monday in the month) **BOOKING ESSENTIAL** through Jan 07710 325 363 or email: [vice-chair@littlehadhamvillagehall.com](mailto:vice-chair@littlehadhamvillagehall.com)  
**11th** 10 – 12 noon Community Breakfast morning **BOOKING ESSENTIAL** on website: [littlehadhamvillagehall.com](http://littlehadhamvillagehall.com) or email [vice-chair@littlehadhamvillagehall.com](mailto:vice-chair@littlehadhamvillagehall.com)  
**19th** 9am - 1pm Little City kids role play

# NOTICEBOARD

## CINEMA EVENTS AT THE VILLAGE HALL

Friday 12th April

7pm

### RED CHAIR CINEMA CLUB

Membership Required. For information email: [redchaircinema@littlehadhamvillagehall.com](mailto:redchaircinema@littlehadhamvillagehall.com)

Monday 15th April

### AFTERNOON CINEMA FLORENCE FOSTER JENKINS –

Biographical Drama (2016)  
Stars Meryl Streep and Hugh Grant

Doors open at 2.30 – film starts at 3pm promptly

£5 admission carers free

Brenda Lennox passed away peacefully at home on 6th March 2024

Her funeral will be at St Cecilia's Church, Little Hadham on **8th April 2024 at 11.30am**

If you or someone close to you is dying, you can talk to us

We know that facing the end of life can leave you feeling isolated and alone. The Anne Robson Trust helpline volunteers are here to listen and support you.

Call us on 0808 801 0688

We're here for you, if you or a loved one are facing the end of life at home, in a hospital, care home or hospice.

To find out more, please visit [www.annerobsontrust.org.uk](http://www.annerobsontrust.org.uk)

AnneRobson Trust

# Local Beekeepers Urge Public To Join Fight Against Destructive Invasive Species

Simon Rice [www.bbka.org.uk](http://www.bbka.org.uk) | [www.nationalbeeunit.com](http://www.nationalbeeunit.com)

- Beekeepers across East Herts are calling on the public to help spot and report Asian Hornet sightings as we head towards spring
- The destructive insect poses the greatest threat to our pollinators, including honey bees, in a generation, when many native species are already threatened
- More UK nests were discovered in 2023 than in the previous six years combined
- The estimated losses to the economy in the UK if the Asian hornet establishes is estimated to be in excess of £30-45 million ever year
- The Non-Native-Species Secretariat estimate that if the UK lost all its pollinators, not just honey bees, it would cost the economy £440 million per year or about 13% of the UK's income from farming.

Master Beekeeper Simon Rice is calling on the public to be vigilant and look out for the yellow legged Asian Hornets and nests as we head into the warmer months.

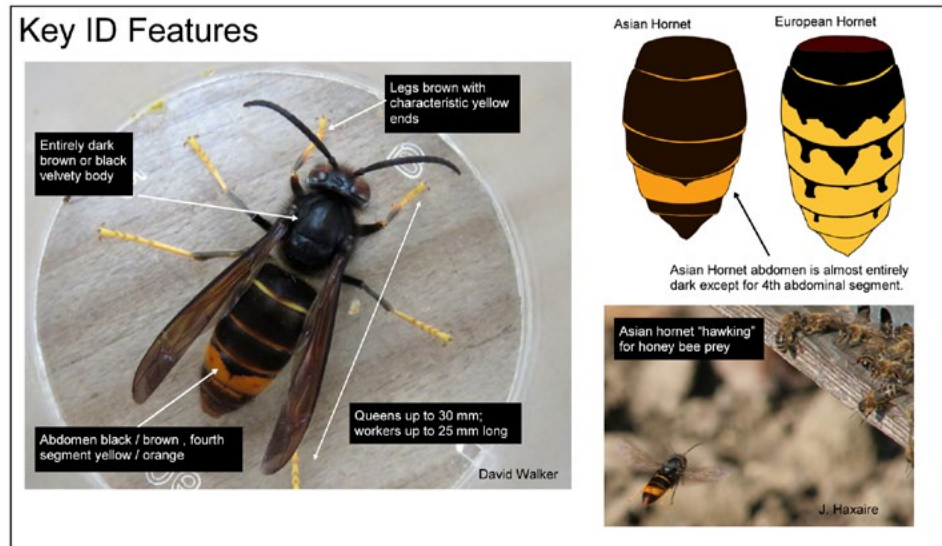
A devastating recent history. A single Asian hornet queen imported in a consignment of pottery from China into France in 2004 it quickly established and spread to many regions of France. As of December 2022, Asian hornet is established in Spain, Belgium, Netherlands, Portugal, Italy, Switzerland, Germany and Jersey. The hornet preys on a wide range of insect pollinators, including honeybees and disrupts the significant ecological role they provide. It has also altered the biodiversity in regions of France where it is present and can be a health risk to those who have allergies to hornet or wasp stings.

By 2022, just 16 Asian Hornet nests had been discovered in this country. But in 2023, this increased dramatically to 78 nests in 56 different locations,

with Kent and the South East most predominantly affected. But there have been sightings in many other locations, including as far north as Scotland, and a credible sighting already reported in January this year, increasing fears the non-native insect may become established in the UK.

**How can I recognise it?** An Asian Hornet can be identified by its very distinct markings - they're slightly smaller than our native European Hornet, which is two or three times the size of a common wasp, and are black with an orange segment on their abdomen. They have distinctive yellow lower legs. See photographs below.

**Where might I see it?** May be seen on flowering plants, ivy, around beehives, around rotting / fermenting fruit and protein and at street markets attracted by sweet fruit and fish stalls. Active February to November across England and Wales.



The public are being urged to stay vigilant, and encouraged to report any suspected sightings on the Asian Hornet Watch app, which is available to download on iOS and Android, using the QR code provided.

Once confirmed expert teams from the National Bee Unit, part of the Government department Defra, will then be deployed to track hornets back to their nests, which are then destroyed.

Reporting a possible sighting of an Asian Hornet is quick, free, and easy and has the potential to make a huge difference in the fight against this invasive species.

## ASIAN HORNET

**This is an invasive species  
a threat to our wildlife**

**REPORT ANY SUSPECTED SIGHTING**

Asian Hornet    European Hornet    Wasp

Large Dark body    Large Yellow body    Small Yellow body

Abdomen - black/brown segments bordered with a yellow band on the 4<sup>th</sup> segment

Body - velvety black/dark brown

Head - black with an orange /yellow face

Legs - brown upper segment with yellow lower segments

Picture by: Isle of Wight Awareness Group

**For further info & to report sightings**

**Search your App store or use the QR code for**

**[bit.ly/asianhornetreport](http://bit.ly/asianhornetreport)**

## ASIAN HORNET

## WATCH

[www.bbka.org.uk](http://www.bbka.org.uk) **THANK YOU!** Designed by @mielidelucia

# St Cecilia's Church Bells

## Quasi

It's competition time. Eight teams from around the area will have competed in the district striking competition held at St Cecilia's on Saturday 16th March. The Hayden Cup competition is named after Reg Hayden a former Bishop's Stortford ringer, has been held since the 1970's. The primary objective of the Hayden Cup six bell striking competition is

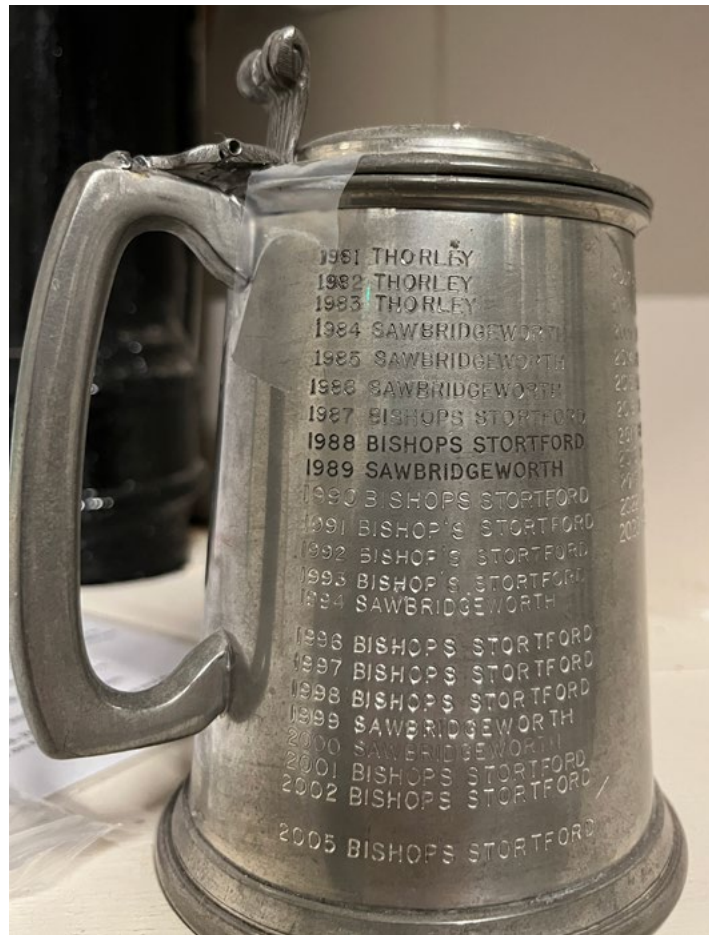
to select two teams to represent the Bishop's Stortford district in the Kimpton Cup competition held later in the year. The secondary objective is to improve striking in the District.

Any tower in the District may enter one or more teams (known as tower bands). As with most competitions there are rules to adhere to and ringing criteria to fulfil such as the ringing should last longer than 8 minutes.

As you can see from the engraving Bishop's Stortford and Sawbridgeworth feature heavily on the cup. Unfortunately we don't have a Little Hadham band nor an Albury one so as an area we join with others - we need more local ringers, I'll be in the Much Hadham band.

I will update you with the results.

Quasi



BOOK YOUR 1ST CLASS FOR £5



## YOU TIME!

Come and join us for a Reformer Pilates, Yoga, or Barre class. At our beautiful studio at Wickham Hall, Bishop's Stortford.

**Call/Book online**  
[www.akashawellness.co.uk](http://www.akashawellness.co.uk)  
 01279 757633



CHLOÉ BURROUGHS REFLEXOLOGY



Relaxing and Rebalancing Reflexology Treatments  
 Advanced Facial Reflexology

[www.chloeburroughsreflexology.com](http://www.chloeburroughsreflexology.com)  
 Phone: 07863346212  
 Email: [Info@chloeburroughsreflexology.com](mailto:Info@chloeburroughsreflexology.com)

Treatment Room in Little Hadham  
*Come and experience the power of reflexology*



Sierra HomeCare

Personal • Caring • Responsive

There's no place like home...

Companionship

Home Help

Personal Care

...to receive care and support to live your life, your way

Tel: 01279 501678

[www.sierrahomecare.co.uk](http://www.sierrahomecare.co.uk)

CQC Registered

attend2health

- Chiropractors
- Physiotherapy
- Osteopathy
- Chiropody & Podiatry
- Sports Massage
- Acupuncture
- Hypnotherapy
- Nutritional Therapy
- GP Services
- Yoga, Pilates & Tai Chi

£20 OFF

YOUR FIRST APPOINTMENT WITH THIS ADVERT\*





01763 87 80 87

[www.attend2health.co.uk](http://www.attend2health.co.uk)  
 27 High Street Buntingford SG9 9AB  
\*Valid for Chiropractic, Osteopathy and Physiotherapy New Patients only.

Award-winning Clinic

The Hadhams' History Society met in February to hear a talk by Anne Rowe on "Unravelling the History of a Country House - Hamels - near Puckeridge" This was a very interesting talk and was enjoyed by everyone.

In March, Sarah Kerrison gave us a great talk on "Land Girls, Brocket Babies and Beyond".

Our next meeting will be on **25th April** 7:45pm for 8pm in The Green Room Much Hadham Village Hall.

Stephen Vincent will be giving a talk on "The Barrow Family - Local Doulton Pottery Artists" and I am sure this will be very interesting.

Do come along and join us as we are a very friendly group. You may wish to join for the year at one of our monthly meetings or alternatively we also welcome visitors for a small fee.

For further information please contact ([katieh69@btinternet.com](mailto:katieh69@btinternet.com))

## Hadham Cross Congregational Church

### PREACHERS FOR APRIL SERVICES AT 11am

7th April	John Fosker	Therfield Congregational Church
14th April	Mike Hillyer	Oakwood Chapel Harlow
21st April	Sam Pakala	Oakwood Chapel Harlow
28th April	Andrew Proudfoot	Therfield Congregational Church

Our next Coffee Morning will be on **Wednesday 10th April** 10am - 12 noon. Please do come and join us for coffee/tea cake and a chat.

All are welcome to join us each Sunday at our 11am Service

**Urgent help is required to play the organ at our 11am Sunday morning service.**

Can you help us - we would love to hear from you. Further details from Kathy Hamilton 01279 843 756

**Our church hall is available for hire - for further details, again contact Kathy: 01279 843 756**

Church Deacons: Brenda Coleshill 01279 842 800 | Kathy Hamilton 01279 843 756

### Luxury Toilet Hire (UK) Ltd



Whether you are arranging a wedding, private party or corporate event, let Luxury Toilet Hire (UK) Ltd provide you with the perfect toilet facility to make your occasion a memorable success.

Tel: 01279 504638 or 01371 873003

Web: [www.luxurytoilethireltd.co.uk](http://www.luxurytoilethireltd.co.uk)

Email: [info@luxurytoilethire.co.uk](mailto:info@luxurytoilethire.co.uk)

We also hire out mobile fridge and freezer trailers.

### S.Southgate Carpentry Services

Free Estimates with no obligation  
 Kitchen Fitting & Tiling  
 Door Hanging  
 Skirtings / Architraves  
 Wood Flooring  
 General DIY & Maintenance  
 22 Years' Carpentry experience

07971 228735

[s.southgatecarpentryservices@hotmail.co.uk](mailto:s.southgatecarpentryservices@hotmail.co.uk)



LITTLE HADHAM FLOATATION CENTRE  
 THE FLOAT RETREAT

HERTFORDSHIRE AND ESSEX  
 FLOATATION CENTRE

BOOK NOW  
**01279 598593**  
[www.thefloatretreat.co.uk](http://www.thefloatretreat.co.uk)  
[thefloatretreat@gmail.com](mailto:thefloatretreat@gmail.com)

**10% off**  
 YOUR FIRST FLOAT  
 USE CODE: FLOAT 10

**BENEFITS OF FLOATATION**

- MUSCLE REPAIR
- STRESS & ANXIETY RELIEF
- MEDITATION
- RELIEVE INSOMNIA
- PAIN MANAGEMENT
- PREGNANCY

Unit 13C Church End Estate, Church End, Little Hadam, Ware, Herts SG11 2DY

# Nature Notes

Jono Forgham

jonoforgham@gmail.com

4 weeks all spent locally with much recording from Millennium and Stocking Woods (see separate article on p18.)

A wonderful walk along the Rib Valley from Standon to Standon Lodge and back offered superb views of a Fallow Deer herd, whilst a walk along the River Stort and Grange Paddocks showed that the over wintering flock of Siskins were still present.

A check on local owls on several nights gave glimpses of Little owls whilst Tawny owls were recorded from several sites after dark. Another trip to Stansted Airport Lagoons where I discovered, not surprisingly, that the lagoons were as full as I have ever seen them and, consequently, most of the diving duck species had departed as the water was too deep. A Grey wagtail was noted on the muddy edge whilst on the water, just a few Tudfted duck, Coots, Mallards, Gadwall and Mallards.

The first chiffchaff of the spring was heard along Ford Hill on the 14th March. This, I suspect to be a bird that overwintered locally but by the end of the month, many more Chiffchaff will arrive from Western Africa and be seen and heard in hedgerows, gardens and local woodlands.

The highlight bird of late has been a Peregrine falcon I came across on St. Michael's church tower in the town centre. A large female has now been roosting there for a fortnight, occasionally joined by a smaller male. Super bird to see locally.



Tawny Owl at its roost



Peregrine falcon on the tower of St Michael's church in Bishop's Stortford



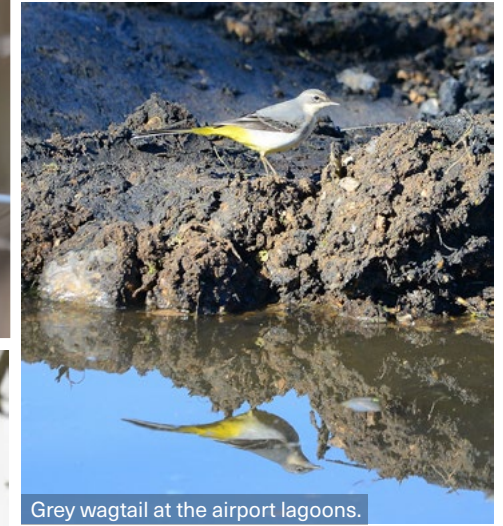
Gadwall at the airport lagoons



Fallow Deer near Standon



Reed Bunting



Grey wagtail at the airport lagoons.



Goldfinch



Male Siskin at Grange Paddocks



Muntjac



# The Hundred Parishes Society

Ken McDonald



The Society's logo is a woodcut by the late Eric Ravillious.

Eric Ravillious and Edward Bawden were both Royal College of Art students when, on a cycling holiday, they happened upon Great Bardfield in Essex. There, they rented Brick House, starting a fascinating period for the village. Over the next two decades, numerous artists came to live there; they became known as The Bardfield Artists.

In 1932 Bawden married fellow student Charlotte Epton, a potter, and his father bought Brick House as a wedding present for them. In the same year Ravillious married Tirzah Garwood, an artist and engraver, and they lodged for a while with the Bawdens at Brick House.

Bawden's work can be seen today on three Victoria Line stations - Victoria, Tottenham Hale and Highbury & Islington - for which he designed the logos.

Another artist, John Aldridge, bought Place House in Great Bardfield in 1933 and soon became friends with Bawden. They produced Bardfield Wallpaper together for the company Cole & Sons to distribute.

In 1952, painter Stanley Clifford-Smith moved into Bucks House and later to the Old Bakehouse. He was very involved in Open House exhibitions that were held in the 1950s when the public could view and buy art in the studios and homes where it had been created.

Marianne Straub, a textile designer, moved to Great Bardfield in 1953, buying Trinity Cottage. She was the senior designer for Warner & Sons of Braintree.

Other Bardfield Artists included Kenneth Rowntree, Michael Rothenstein and Walter Hoyle.

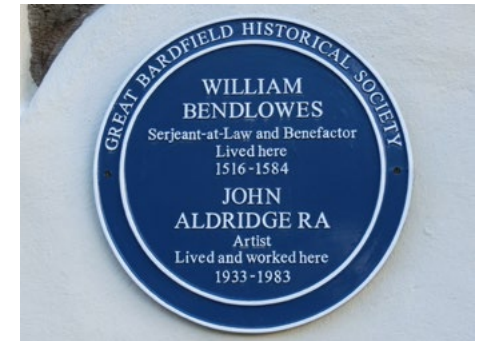
A good selection of the Bardfield Artists' work can be seen at Fry Art Gallery in Saffron Walden - it reopens on April 7th - see <https://fryartgallery.org/> for opening hours. In Great Bardfield, books and other information about the artists can be purchased at the new premises of Between The Lines bookshop.



Brick House, Great Bardfield



Place House, Great Bardfield



Edward Bawden's logo at Tottenham Hale Station



Edward Bawden's logo at Highbury & Islington



The Hundred Parishes logo by Eric Ravillious

**Bishop's Stortford Chimney Services**



Office: 01279 771462  
Mobile: 07990 770883

- Chimney sweeping
- Stove installation
- Maintenance & repairs
- Pots & cowls fitted
- Certificates issued
- Free estimates

bishopstortfordchimneyservices.co.uk  
richard.mardell@yahoo.co.uk



# VST PAINTING & DECORATING



**Laurence Baldwin**

laurence@vstdecorating.co.uk

07989 968 278

Your resident decorator

Fully Insured

## Talking Bowls...or Something

Jack      Much Hadham Bowling Club: Recreation Ground, Much Hadham SG10 6DL

By the time you read this our St. Patricks Day celebrations will have passed. The idea of a two course Irish lunch followed by a sing-a-long of Irish songs and some jigs etc. must have hit the right note for we needed to exceed our planned numbers to satisfy demand. A bit tough on our volunteer chefs but they were amenable so it has the hallmark of being a very successful event. It may also be amusing to see some of our older members trying to imitate Michael Flatley's Lord of the Dance!

Our next social event is on **Saturday 13 April** when we "go to the races" for Grand National Day. The idea is that those who always have a flutter will have placed their bets and then gather

to watch the race on our large(ish) screen and so recreate some of the atmosphere and excitement of actually being at Aintree. There will also be a sweepstake so non-gamblers can also be part of that excitement - afternoon tea is included with the ticket. It should be a fun and enjoyable afternoon.

Our annual membership subscriptions for this coming year are now due and there is no increase on last year's price of £100 for adult full membership which includes both Bowls and Croquet or £15 per social member – the latter giving access to all our Wednesday evening club/social evenings and all our special functions and events, and of course, club prices at the bar.

If you would like to join us, maybe try out bowls and/or croquet, or become a social member please call 01279 842 637.

**We will also be holding a Bowls OPEN DAY on Sunday 19 May from 2pm to which all will be made welcome.**

Hope to see you at one of these events. Jack

## DANIEL ROBINSON & SONS

**Independent Family Funeral Directors & Monumental Masons**

Est 1892

Always here when you need us...

- Arrangements in the comfort of your own home, if preferred
- Private Chapels of Rest
- Prepaid funeral planning services
- Traditional & contemporary funerals to suit your wishes



79/81 South Street  
BISHOP'S STORTFORD  
01279 655477

3 Bullfields  
SAWBRIDGEWORTH  
01279 722476

enquiries@drobinson.co.uk ~ www.drobinson.co.uk



**M Perkins  
Decorators  
Interior & Exterior Decorating**

Established 25yrs+  
Quality Workmanship  
References Available  
Competitive Prices

**Tel: 01279-771192  
Mobile: 07932-928148**

Email: [contact@imperkinsdecorators.com](mailto:contact@imperkinsdecorators.com)  
Website: [www.mperkinsdecorators.com](http://www.mperkinsdecorators.com)



# THE GARDENS OF EASTON LODGE

Jill Goldsmith  
www.eastonlodge.co.uk



April is the start of the main season at the Gardens – we open weekly on Thursdays, starting on 4 April, and our first main season **Open Day is on 21 April**.

Through March we hope the weather will have allowed us to get planting. A range of new trees for the Glade, including Cercidiphyllum (Katsura) and Acers, will have been OK with going into wet soil, but elsewhere we hope the ground will have dried out so that grass returns to the mud patches created by the standing water in February. Our volunteers will have worked to extend the Japanese garden, and planted more shrubs and small conifers into the new Warwick border (behind the croquet lawn). In the kitchen garden much of the early sowings of peas and beans will have been in pots, so by April we can transfer plants and hopefully avoid them being eaten by all the wildlife in the garden - the mice, slugs, moles and pigeons to name a few!

The joys of April should be the spring flowers and blossom. After working to

clear some woodland, we hope the bluebells will be able to come through more strongly and there may be the tail end of the daffodils, cowslips and violets. In the Italian garden the tulips should be providing bright colours to the fresh greens of spring growth. In the kitchen garden there will be a succession of blossom. The first blossom is the nectarines and peaches in March, followed by plum and cherries. By April it should be pears and apples. In the Glade there will be blossom on the flowering cherries and hawthorn.

The Gardens are open from 11 to 3 on Thursdays, with payment on the Gate. Our volunteers provide hot and cold drinks and homemade cakes. For the **Open Day on 21 April**, 11-5 there will be folk and acoustic music from Karen and Tony, children's craft and trail and the usual fayre for a Sunday: hot bacon rolls, cheese or hummus rolls, homemade soup and cakes. For more information go to [www.eastonlodge.co.uk/whats-on](http://www.eastonlodge.co.uk/whats-on)

Visit our Bishop's Stortford showroom with a huge selection of sofas, chairs, sofabeds and recliners

## Easy Chair & Sofa Co

*The South East's Largest Sofa and Chair Retailer*



Talk to the experts - our personal service, attention to detail and 40 years of experience set us apart from the rest

34 Twyford Business Centre, London Road, Bishop's Stortford, CM23 3YT. T: 01279 465863

[www.easychaircompany.co.uk](http://www.easychaircompany.co.uk)

**Peter Worby**  
Antiques Restoration

**ANTIQUES  
RESTORATION**  
over 40 years  
experience

All Repairs, Inc. Modern,  
Polishing  
Fully Insured, Free  
Estimates, No V.A.T.  
Tel: 01920 821973  
e.mail:  
[peterworby56@gmail.com](mailto:peterworby56@gmail.com)

**TPM**

for your

**Total Property Maintenance**

Unable to get 'that job' done?  
Painting, Decorating and Tiling  
Complete kitchens and bathrooms  
Maintenance and Repairs  
Garden Fencing

Call Tim Mearing for a  
Free estimate



07970 599204  
01279 771288



e-mail: [timmearing@hotmail.com](mailto:timmearing@hotmail.com)  
- Highly respected local service -  
*most work obtained through  
personal recommendation*

Stansted's  
Best Kept Secret

# Gallery @ MOUNTFITCHET

Paintings by  
Anne McCormack RI SWA

Viewing details & opening times visit:  
[annemccormack.com](http://annemccormack.com)

# JACKS

GROUNDWORKS

## DIGGER AND OPERATOR FOR HIRE

- Excavations · Driveways
- Foundations · Footings
- Drainage · Soakaways
- Septic Tanks

**07940 231964**  
**01279 755545**

## DO YOU NEED A GRAPHIC DESIGNER?

Hello! I'm a local graphic designer. I specialise in helping small businesses reach their full potential and attract new audiences.

Contact me on  
[anne@thehumbleline.com](mailto:anne@thehumbleline.com)  
to talk about your project.

- Branding & Logo Design
- Brochures, Leaflets, Posters, Reports
- Packaging
- Adverts & Marketing
- Web Design & Social Media
- Copywriting & Typesetting



[www.thehumbleline.com](http://www.thehumbleline.com) | [anne@thehumbleline.com](mailto:anne@thehumbleline.com) | [@thehumbleline](https://www.instagram.com/thehumbleline) 



- Bespoke ponds & water features
- Fish ponds, wildlife ponds, swim ponds
- Child safe streams & pondless waterfalls

Brook House, Albury  
01279 771 084 | 07889 655 908  
[www.creativecascades.co.uk](http://www.creativecascades.co.uk)  
[enquiries@creativecascades.co.uk](mailto:enquiries@creativecascades.co.uk)



office@cpreherts.org.uk

[www.cpreherts.org.uk](http://www.cpreherts.org.uk)

### Are you involved with an organisation which is looking for interesting and informative talks?

If so, please contact us. We are Hertfordshire's countryside charity, working across the county to stand up for our countryside and green spaces.

Some of the things our charity works to do are: promote the benefits of the countryside and our natural environment to everyone, wherever they live; raise awareness of the Hertfordshire countryside as a vital space for health and wellbeing; encourage care of our chalk streams, woodlands, fields and hedgerows to help protect landscapes and wildlife.

One of the ways we do this is by offering a variety of interesting talks on the following topics:

- Why we need to protect the countryside – CPRE Hertfordshire's role
- Exploring Rural Hertfordshire – a walk along the Hertfordshire Way
- Following the Swan – a walk of discovery down the Lea Valley
- A Recent History of Hertfordshire – and how CPRE continues to campaign to protect the countryside
- A Tour of some Churches in Rural Hertfordshire



- Countryside Close to Home – some wildlife in a Hertfordshire garden, and how to attract wildlife to any garden

We can adjust the length of any talk to suit the requirements of your meeting. Many of our talks are illustrated with PowerPoint slides and our speaker can bring a projector; a screen or white wall available in your meeting place is helpful but we can provide a screen if needed.

Being a charity ourselves, we do normally ask for a donation which helps to support CPRE's work in the county. If your group has a small membership we can reduce this amount on request.

For more information or to make a booking, please contact us by emailing [office@cpreherts.org.uk](mailto:office@cpreherts.org.uk)

*To find out more about CPRE Hertfordshire please visit our website [www.cpreherts.org.uk](http://www.cpreherts.org.uk)*

# Sargies

Garden and Countryside Services



- \* Hedge Cutting & Mowing
- \* Fencing
- \* Tree Surgery & Stump removal
- \* Sheds & Buildings
- \* Decking, Patios & Driveways
- \* Ponds & Ditches
- \* Field Maintenance
- \* Hard & Soft Landscaping
- \* Seasonal Maintenance
- \* General Maintenance

**All Jobs Considered**  
 Contact Tim or Jack Sargent  
 Tel. 07977 264 204  
 @. Sargies@gmail.com



## TRUSTED STANDON BASED WILL WRITER




- ◆ Will Writing & Trusts
- ◆ Lasting Power of Attorneys (LPA's)
- ◆ Probate Administration
- ◆ Inheritance Tax and Estate Planning

Providing a professional, friendly service,  
 I offer free advice and will guide you through your options.

Member of The Society of Will Writers  Safe to do business with Code Compliant

[www.dqrwillsandprobate.co.uk](http://www.dqrwillsandprobate.co.uk)  
 01920 747208 | emma@dqrwillsandprobate.co.uk  
 See my recent reviews on Facebook: @dqrwillsandprobate



## YOGA CLASSES

I am a Power Yoga Teacher. I incorporate poses that will bring strength and flexibility to your body along with a sense of inner peace and well-being to your mind. Start your journey today.

**To suit all levels – Offering:**

- Power • Vinyasa Flow • Slow Flow • Yin

Workshops and Sanctuary Days  
 Tailored 1-2-1 Option

Please call to discuss your needs

☎ 07860 929379  
 ✉ jane@janeroseyoga.com  
 🌐 janeroseyoga.com  
 📱 janeroseyoga

Visit me at my studio in Standon



## HOWE GREEN HOUSE SCHOOL

Independent Co-ed Prep School for 4 to 11 years  
 and Little Oaks Nursery School for 2 to 4 years

[www.howegreenhouseschool.co.uk](http://www.howegreenhouseschool.co.uk)  
 01279 657706



## Connect your home

We're your local experts in cutting-edge home technology & bespoke installations. So you can truly connect your home thanks to our range of; satellite dishes, aerials, network solutions, sound systems and home cinema solutions.



- 1 Custom satellite dish installation
- 2 Bespoke home cinema set up
- 3 Watch Sky in any room
- 4 Whole Home Audio
- 5 CCTV & Alarm

### Visit Our New Store

Mediacoms: Unit i, Suite 1, Peek Business Centre,  
 Woodside Industrial Estate, Bishops Stortford. CM23 5RG

Call us today or visit [www.mediacoms.co.uk](http://www.mediacoms.co.uk)

Essex & Herts: 01279 656983  
 London: 020 8524 6882






Your Local Sky Expert



All electrical work undertaken.   
 Lights, sockets, showers, fuseboards, extractors, outside lighting, cookers etc.  
 No job too small!   
 Call James on **07799-626411** 

### JORDAN OIL BURNER SERVICES

ESTABLISHED 1968

An independent oil boiler commissioning, servicing & breakdown company

OFTEC Registered

All our vans carry a range of genuine boiler spares

81 Lingfield Road, Stevenage, Herts SG1 5SQ

Tel: **01438 355583 / Mob: 07831 364607**

[www.jordanoil.co.uk](http://www.jordanoil.co.uk)

### LTH Waste Removal

Effluent & Liquid Waste Removal



Your local service provider for all effluent and liquid waste removal including:

- Cesspits
- Septic tanks
- Klargesters and Bio disks

LTH provides a personal, professional and efficient service at a very competitive rate.

For a free quotation, and site visit if required, please call us on:

**01279 504638**  
**01371 873003**

or email:

[info@luxurytoilethire.co.uk](mailto:info@luxurytoilethire.co.uk)



**Oliver Minton**  
Sales & Lettings

With our Puckeridge Office, complemented by our other offices in Stanstead Abbots & Roydon, we are perfectly placed to attract buyers originating from areas such as Enfield & Cheshunt, who desire a more rural environment

Call 01920 822999  
[www.oliverminton.com](http://www.oliverminton.com)

### HERTFORD TV SERVICE

Please call: **01992 552955**

- AERIALS & SATELLITE INSTALLATIONS/REPAIRS
- TV REPAIRS (OLED, LCD, LED)
- TV WALL MOUNTING & SOUNDBARS
- WIFI SYSTEMS & DATA NETWORKING
- CCTV & WIRELESS BURGLAR ALARM SYSTEMS

[www.hertfordtvservice.co.uk](http://www.hertfordtvservice.co.uk)

Unit 1B, Foxholes Avenue, Hertford SG13 7JG  
 LOCAL FAMILY BUSINESS EST 1979  
 ALL WORK FULLY GUARANTEED

## Rural Ramblings

### Cherry Mardell

I've got a new name now – call me Jaffa!

Past experience showed that my recently dyed pink hair was well received by most people. I enjoyed it and others made generally polite comments at my new look. So I was looking forward to a hairdresser renewing the look last week when I visited her home salon. It was obviously a busy morning for her, as two other customers arrived around the same time.

She was busy chatting as she smothered my hair with the dye. I sat, silent, as she worked the colour in, although I was slightly worried that it all looked a trifle red, rather than bright pink. She then left me alone for it to 'set'. I sat, looking at the redness of it all, but secure in the knowledge she had cut and styled my hair successfully for years, I waited for her to return and wash it out. It was then she seemed to realise that something was a-miss.... and she plastered a white product on top of the red, before washing everything out

That's when I fully realised the awfulness of what had happened! Call me Jaffa orangehead!

Every time I passed a mirror ( and it is not until you don't want to see yourself that you realise just how many mirrors are about!) I stared at this hugely ugly orange blob on the top of my head. My husband, who is

not given to saying very much, visibly gulped and offered the kind words "it will wash out ... eventually".

Friends looked in disbelief before muttering quietly about washing said orange blob daily ...or wearing a hat!

Even one of our local doctors took one look at me and commented "Like the colour but you'll have to change your pink handbag!... which I did that very day!

Since then I have washed my hair virtually daily and it has gradually become a gentler version of the initial orange.

Will I dare to try again?

Only time will tell!

\*\*\*\*\*

Last week we went on an all-inclusive short break in the UK. And when it says all-inclusive, that's just what it means... food, drink, every kind of outdoor sporting activity and good evening entertainment! And other than being blown away by the high standard of it all, the one thing that struck us was how old everyone was! There wasn't anyone there – and we're talking about two or three hundred people – who wasn't drawing the old age pension! Ourselves included!

At least, we oldies know how to have fun!

# Parish Services April 2024

Benefice of: Little Hadham | Much Hadham | Albury

	Easter 2 <b>7th April</b>	Easter 3 <b>14th April</b>	Easter 4 <b>21st April</b>	Easter 5 <b>28th April</b>
<b>St Andrew's</b> Much Hadham			9:15am <b>Benefice Holy Communion</b> <i>Tayo</i>	
<b>St Cecilia's</b> Little Hadham	11:15am <b>Benefice Holy Communion or Morning Prayer</b>			9:15am <b>Benefice Holy Communion</b> <i>Tayo</i>
<b>St Mary's</b> Albury		9:15am <b>Benefice Holy Communion or Morning Prayer</b>		

## OTHER SERVICES:

**Sat 20th**      **4:30pm**      Messy Church at St Andrew's Church  
**Thur 25th**      **10am**      Little Hadham Communion

**All are welcome to join our services**